

## ACTBM Rabbit pAb

CatalogNo: YN1909

### Key Features

#### Host Species

- Rabbit

#### Reactivity

- Human

#### Applications

- WB,ELISA

#### MW

- 41kD (Observed)

#### Isotype

- IgG

### Recommended Dilution Ratios

**WB 1:500-2000**

**ELISA 1:5000-20000**

### Storage

**Storage\*** -15°C to -25°C/1 year(Do not lower than -25°C)

**Formulation** Liquid in PBS containing 50% glycerol,0.5% BSA and 0.02% sodium azide.

### Basic Information

**Clonality** Polyclonal

### Immunogen Information

**Immunogen** Synthesized peptide derived from part region of human protein

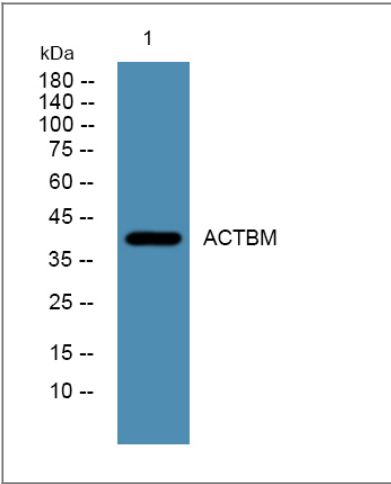
**Specificity** ACTBM Polyclonal Antibody detects endogenous levels of protein.

### Target Information

**Gene name** POTEKP ACTBL3 FKSG30

<b>Protein Name</b>	Putative beta-actin-like protein 3 (Kappa-actin) (POTE ankyrin domain family member K)		
	<b>Organism</b>	<b>Gene ID</b>	<b>UniProt ID</b>
	Human		<a href="#">Q9BYX7</a> ;
<b>Cellular Localization</b>	Cytoplasm, cytoskeleton .		
<b>Tissue specificity</b>	Expressed in some hepatocellular carcinomas.		
<b>Function</b>	similarity:Belongs to the actin family.,subunit:Interacts with PFN1 and PFDN1. Does not interact with PFN2.,tissue specificity:Expressed in some hepatocellular carcinomas.,		

| Validation Data



Western blot analysis of lysates from HCT116 cells, primary antibody was diluted at 1:1000, 4°over night

| Contact information

Orders: [order@immunoway.com](mailto:order@immunoway.com)  
 Support: [tech@immunoway.com](mailto:tech@immunoway.com)  
 Telephone: 877-594-3616 (Toll Free), 408-747-0185  
 Website: <http://www.immunoway.com>  
 Address: 2200 Ringwood Ave San Jose, CA 95131 USA



Please scan the QR code  
 to access additional  
 product information:  
**ACTBM Rabbit pAb**