

APOH Rabbit pAb

CatalogNo: YN1900

Key Features

Host Species

- Rabbit

Reactivity

- Human, Mouse, Rat

Applications

- WB, ELISA

MW

- 37kD (Observed)

Isotype

- IgG

Recommended Dilution Ratios

WB 1:500-2000

ELISA 1:5000-20000

Storage

Storage* -15°C to -25°C/1 year (Do not lower than -25°C)

Formulation Liquid in PBS containing 50% glycerol, 0.5% BSA and 0.02% sodium azide.

Basic Information

Clonality Polyclonal

Immunogen Information

Immunogen Synthesized peptide derived from part region of human protein

Specificity APOH Polyclonal Antibody detects endogenous levels of protein.

Target Information

Gene name APOH B2G1

Protein Name Beta-2-glycoprotein 1 (APC inhibitor) (Activated protein C-binding protein) (Anticardiolipin cofactor) (Apolipoprotein H) (Apo-H) (Beta-2-glycoprotein I) (B2GPI) (Beta(2)GPI)

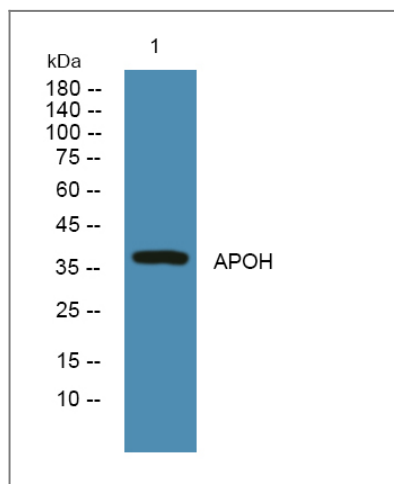
Organism	Gene ID	UniProt ID
Human	350;	P02749;
Mouse		Q01339;
Rat		P26644;

Cellular Localization Secreted.

Tissue specificity Expressed by the liver and secreted in plasma.

Function Function: Binds to various kinds of negatively charged substances such as heparin, phospholipids, and dextran sulfate. May prevent activation of the intrinsic blood coagulation cascade by binding to phospholipids on the surface of damaged cells. miscellaneous: In addition to the conflicts shown in the feature table, PubMed:6587378 reports an N-glycosylation site at Asn-188. online information: The Singapore human mutation and polymorphism database. similarity: Contains 4 Sushi (CCP/SCR) domains. tissue specificity: Expressed by the liver and secreted in plasma.,

Validation Data



Western blot analysis of lysates from SH-SY5Y cells, primary antibody was diluted at 1:1000, 4° over night

Contact information

Orders: order@immunoway.com
Support: tech@immunoway.com
Telephone: 877-594-3616 (Toll Free), 408-747-0185
Website: <http://www.immunoway.com>
Address: 2200 Ringwood Ave San Jose, CA 95131 USA



Please scan the QR code to access additional product information:
APOH Rabbit pAb

