

## CSK22 Rabbit pAb

CatalogNo: YN1864

### Key Features

#### Host Species

- Rabbit

#### Reactivity

- Human, Mouse

#### Applications

- WB, ELISA

#### MW

- 38kD (Observed)

#### Isotype

- IgG

### Recommended Dilution Ratios

WB 1:500-2000

ELISA 1:5000-20000

### Storage

**Storage\*** -15°C to -25°C/1 year (Do not lower than -25°C)

**Formulation** Liquid in PBS containing 50% glycerol, 0.5% BSA and 0.02% sodium azide.

### Basic Information

**Clonality** Polyclonal

### Immunogen Information

**Immunogen** Synthesized peptide derived from part region of human protein

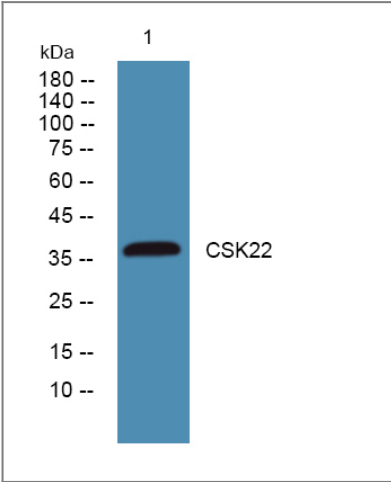
**Specificity** CSK22 Polyclonal Antibody detects endogenous levels of protein.

### Target Information

**Gene name** CSNK2A2 CK2A2

|                              |   |                       |                         |
|------------------------------|---|-----------------------|-------------------------|
| <b>Protein Name</b>          | Casein kinase II subunit alpha' (CK II alpha') (EC 2.7.11.1)  |                       |                         |
|                              | <b>Organism</b>   | <b>Gene ID</b>        | <b>UniProt ID</b>       |
|                              | Human   | <a href="#">1459;</a> | <a href="#">P19784;</a> |
|                              | Mouse   |                       | <a href="#">O54833;</a> |
| <b>Cellular Localization</b> | Nucleus . Cytoplasm . Interaction with SIRT6 prevents translocation into the nucleus. .   |                       |                         |
| <b>Tissue specificity</b>    | Ovary,  |                       |                         |
| <b>Function</b>              | Catalytic activity:ATP + a protein = ADP + a phosphoprotein.,Function:Casein kinases are operationally defined by their preferential utilization of acidic proteins such as caseins as substrates. The alpha and alpha' chains contain the catalytic site. Participates in Wnt signaling. CK2 phosphorylates 'Ser-392' of p53/TP53 following UV irradiation.,similarity:Belongs to the protein kinase superfamily. Ser/Thr protein kinase family. CK2 subfamily.,similarity:Contains 1 protein kinase domain.,subunit:Tetramer composed of an alpha chain, an alpha' and two beta chains. Also component of a CK2-SPT16-SSRP1 complex composed of SSRP1, SUPT16H, CSNK2A1, CSNK2A2 and CSNK2B, the complex associating following UV irradiation., |                       |                         |

Validation Data



Western blot analysis of lysates from K562 cells, primary antibody was diluted at 1:1000, 4°over night

Contact information

Orders: order@immunoway.com  
Support: tech@immunoway.com  
Telephone: 877-594-3616 (Toll Free), 408-747-0185  
Website: http://www.immunoway.com  
Address: 2200 Ringwood Ave San Jose, CA 95131 USA



Please scan the QR code to access additional product information:  
**CSK22 Rabbit pAb**

