

PKNX1 Rabbit pAb

CatalogNo: YN1831

Key Features

Host Species

- Rabbit

Reactivity

- Human, Mouse

Applications

- WB, ELISA

MW

- 47kD (Observed)

Isotype

- IgG

Recommended Dilution Ratios

WB 1:500-2000

ELISA 1:5000-20000

Storage

Storage* -15°C to -25°C/1 year (Do not lower than -25°C)

Formulation Liquid in PBS containing 50% glycerol, 0.5% BSA and 0.02% sodium azide.

Basic Information

Clonality Polyclonal

Immunogen Information

Immunogen Synthesized peptide derived from part region of human protein

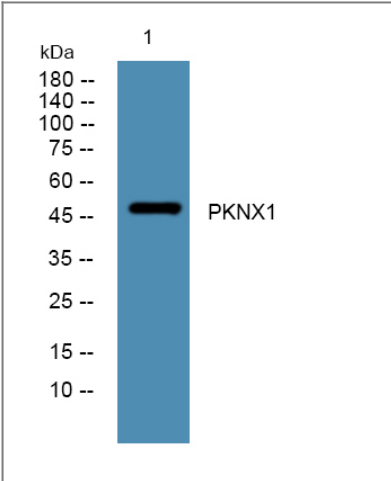
Specificity PKNX1 Polyclonal Antibody detects endogenous levels of protein.

Target Information

Gene name PKNX1 PREP1

Protein Name	Homeobox protein PKNX1 (Homeobox protein PREP-1) (PBX/knotted homeobox 1)		
	Organism	Gene ID	UniProt ID
	Human	5316 ;	P55347 ;
	Mouse		O70477 ;
Cellular Localization	Nucleus .		
Tissue specificity	Ubiquitous. Isoform 2 is expressed in all examined tissues except in bone marrow.		
Function	similarity:Belongs to the TALE/MEIS homeobox family.,similarity:Contains 1 homeobox DNA-binding domain.,tissue specificity:Ubiquitous. Isoform 2 is expressed in all examined tissues except in bone marrow.,		

Validation Data



Western blot analysis of lysates from SH-SY5Y cells, primary antibody was diluted at 1:1000, 4°over night

Contact information

Orders: order@immunoway.com
 Support: tech@immunoway.com
 Telephone: 877-594-3616 (Toll Free), 408-747-0185
 Website: <http://www.immunoway.com>
 Address: 2200 Ringwood Ave San Jose, CA 95131 USA



Please scan the QR code to access additional product information:
PKNX1 Rabbit pAb