

NFIP2 Rabbit pAb

CatalogNo: YN1822

Key Features

Host Species

- Rabbit

Reactivity

- Human, Mouse

Applications

- WB, ELISA

MW

- 36kD (Observed)

Isotype

- IgG

Recommended Dilution Ratios

WB 1:500-2000

ELISA 1:5000-20000

Storage

Storage* -15°C to -25°C/1 year (Do not lower than -25°C)

Formulation Liquid in PBS containing 50% glycerol, 0.5% BSA and 0.02% sodium azide.

Basic Information

Clonality Polyclonal

Immunogen Information

Immunogen Synthesized peptide derived from part region of human protein

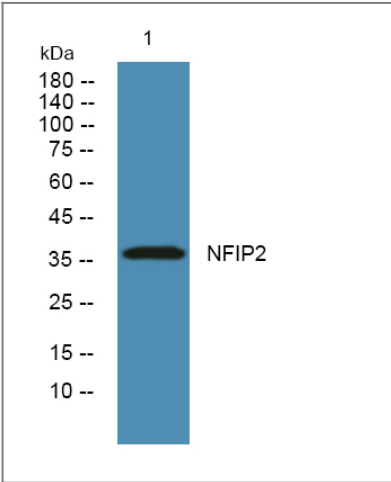
Specificity NFIP2 Polyclonal Antibody detects endogenous levels of protein.

Target Information

Gene name NDFIP2 KIAA1165 N4WBP5A

Protein Name	NEDD4 family-interacting protein 2 (NEDD4 WW domain-binding protein 5A) (Putative MAPK-activating protein PM04/PM05/PM06/PM07) (Putative NF-kappa-B-activating protein 413)		
	Organism	Gene ID	UniProt ID
	Human	54602 ;	Q9NV92 ;
	Mouse		Q91ZP6 ;
Cellular Localization	Endosome membrane ; Multi-pass membrane protein . Golgi apparatus membrane . Endosome, multivesicular body membrane .		
Tissue specificity	Expressed in brain, lung, heart, skeletal muscle, kidney, liver and placenta.		
Function	Function:May be involved in endocytosis. Regulates ENaC surface expression (By similarity). May be involved in NF-kappa-B and MAPK signaling pathways.,induction:By T-cell activation.,PTM:Ubiquitinated by NEDD4 or NEDD4L; which does not affect turnover.,subunit:Interacts with NEDD4L (By similarity). Interacts with NEDD4.,tissue specificity:Expressed in brain, lung, heart, skeletal muscle, kidney, liver and placenta.,		

Validation Data



Western blot analysis of lysates from PC12 cells, primary antibody was diluted at 1:1000, 4°over night

Contact information

Orders: order@immunoway.com
Support: tech@immunoway.com
Telephone: 877-594-3616 (Toll Free), 408-747-0185
Website: http://www.immunoway.com
Address: 2200 Ringwood Ave San Jose, CA 95131 USA



Please scan the QR code to access additional product information:
NFIP2 Rabbit pAb

