

CR3L3 Rabbit pAb

CatalogNo: YN1809

Orthogonal Validated 

Key Features

Host Species

- Rabbit

Reactivity

- Human, Mouse, Rat

Applications

- WB, ELISA

MW

- 50kD (Observed)

Isotype

- IgG

Recommended Dilution Ratios

WB 1:500-2000**ELISA 1:5000-20000**

Storage

Storage*

-15°C to -25°C/1 year (Do not lower than -25°C)

Formulation

Liquid in PBS containing 50% glycerol, 0.5% BSA and 0.02% sodium azide.

Basic Information

Clonality

Polyclonal

Immunogen Information

Immunogen

Synthesized peptide derived from part region of human protein AA range: 1-100

Specificity

CR3L3 Polyclonal Antibody detects endogenous levels of protein.

Target Information

Gene name

CREB3L3 CREBH HYST1481

Protein Name Cyclic AMP-responsive element-binding protein 3-like protein 3 (cAMP-responsive element-binding protein 3-like protein 3) (Transcription factor CREB-H) [Cleaved into: Processed cyclic AMP-responsive element-binding protein 3-like protein 3]

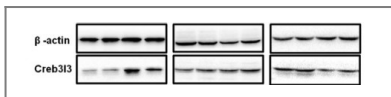
Organism	Gene ID	UniProt ID
Human	84699 ;	Q68CJ9 ;
Mouse		Q91XE9 ;
Rat		Q5FVM5 ;

Cellular Localization Endoplasmic reticulum membrane ; Single-pass type II membrane protein .; [Processed cyclic AMP-responsive element-binding protein 3-like protein 3]; Nucleus . Under ER stress the cleaved N-terminal cytoplasmic domain translocates into the nucleus.

Tissue specificity Exclusively expressed in liver. Underexpressed in hepatocellular carcinoma tissues.

Function Function:Transcription factor that may act during endoplasmic reticulum stress by activating unfolded protein response target genes. Activated in response to cAMP stimulation. In vitro, binds to the cAMP response element (CRE) and box-B element. Activates transcription through box-B element. Activates transcription through CRE (By similarity). Seems to function synergistically with ATF6. In acute inflammatory response, may activate expression of acute phase response (APR) genes. May be involved in growth suppression.,PTM:Controlled by regulated intramembrane proteolysis (RIP). Following ER stress a fragment containing the cytoplasmic transcription factor domain is released by proteolysis. The cleavage seems to be performed sequentially by site-1 and site-2 proteases (PS1 and PS2).,similarity:Belongs to the bZIP family.,similarity:Belongs to the bZIP family. ATF subfamily.,similarity:Contains 1 bZIP domain.,subcellular location:Under ER stress the cleaved N-terminal cytoplasmic domain translocates into the nucleus.,subunit:Binds DNA as a dimer (By similarity). Probably homodimerizes. Probably forms a heterodimer with atf6. Interacts with atf6.,tissue specificity:Exclusively expressed in liver. Underexpressed in hepatocellular carcinoma tissues.,

Validation Data



Liu, Xiaomei, et al. "Maternal protein restriction induces alterations in hepatic unfolded protein response-related molecules in adult rat offspring." *Frontiers in endocrinology* 9 (2018).

Contact information

Orders: order@immunoway.com
 Support: tech@immunoway.com
 Telephone: 877-594-3616 (Toll Free), 408-747-0185
 Website: <http://www.immunoway.com>
 Address: 2200 Ringwood Ave San Jose, CA 95131 USA



Please scan the QR code to access additional product information:
CR3L3 Rabbit pAb

