

## KBR52 Rabbit pAb

CatalogNo: YN1807

### Key Features

#### Host Species

- Rabbit

#### Reactivity

- Human, Mouse

#### Applications

- WB, ELISA

#### MW

- 21kD (Observed)

#### Isotype

- IgG

### Recommended Dilution Ratios

WB 1:500-2000

ELISA 1:5000-20000

### Storage

**Storage\*** -15°C to -25°C/1 year (Do not lower than -25°C)

**Formulation** Liquid in PBS containing 50% glycerol, 0.5% BSA and 0.02% sodium azide.

### Basic Information

**Clonality** Polyclonal

### Immunogen Information

**Immunogen** Synthesized peptide derived from part region of human protein

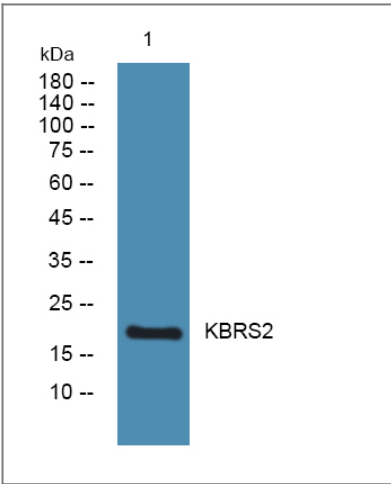
**Specificity** KBR52 Polyclonal Antibody detects endogenous levels of protein.

### Target Information

**Gene name** NKIRAS2 KBRAS2

<b>Protein Name</b>	NF-kappa-B inhibitor-interacting Ras-like protein 2 (I-kappa-B-interacting Ras-like protein 2) (Kappa B-Ras protein 2) (KappaB-Ras2)		
	<b>Organism</b>	<b>Gene ID</b>	<b>UniProt ID</b>
	Human	<a href="#">28511</a> ;	<a href="#">Q9NYR9</a> ;
	Mouse		<a href="#">Q9CR56</a> ;
<b>Cellular Localization</b>	Cytoplasm .		
<b>Tissue specificity</b>	Widely expressed.		
<b>Function</b>	<p>Domain:In contrast to other members of the Ras family, the members of the KappaB-Ras subfamily do not contain the conserved Gly and Gln residues in positions 13 and 65, which are replaced by Ala and Leu residues, respectively, and are therefore similar to the constitutively active forms of oncogenic forms of Ras. This suggests that members of this family are clearly different from other small GTPases proteins.,Function:Atypical Ras-like protein that acts as a potent regulator of NF-kappa-B activity by preventing the degradation of NF-kappa-B inhibitor beta (NFKBIB) by most signals, explaining why NFKBIB is more resistant to degradation. May act by blocking phosphorylation of NFKBIB and nuclear localization of p65/RELA NF-kappa-B subunit. It is unclear whether it acts as a GTPase. Both GTP- and GDP-bound forms block phosphorylation of NFKBIB.,sequence Caution:Absence of residues from position 133 within an exon that change the frame which is not the result of an alternative splicing.,similarity:Belongs to the small GTPase superfamily. Ras family. KappaB-Ras subfamily.,subunit:Interacts with both NF-kappa-B inhibitor alpha (NFKBIA) and beta (NFKBIB) in vitro. However, it probably only interacts with NFKBIB in vivo.,tissue specificity:Widely expressed.,</p>		

| Validation Data



Western blot analysis of lysates from SH-SY5Y cells, primary antibody was diluted at 1:1000, 4°over night

| Contact information

Orders: order@immunoway.com  
Support: tech@immunoway.com  
Telephone: 877-594-3616 (Toll Free), 408-747-0185  
Website: http://www.immunoway.com  
Address: 2200 Ringwood Ave San Jose, CA 95131 USA



Please scan the QR code  
to access additional  
product information:  
**KBRs2 Rabbit pAb**

---

For Research Use Only. Not for Use in Diagnostic Procedures.

[Antibody](#) | [ELISA Kits](#) | [Protein](#) | [Reagents](#)