

PK1IP Rabbit pAb

CatalogNo: YN1786

Key Features

Host Species

- Rabbit

Reactivity

- Human, Mouse

Applications

- WB, ELISA

MW

- 43kD (Observed)

Isotype

- IgG

Recommended Dilution Ratios

WB 1:500-2000**ELISA 1:5000-20000**

Storage

Storage* -15°C to -25°C/1 year (Do not lower than -25°C)**Formulation** Liquid in PBS containing 50% glycerol, 0.5% BSA and 0.02% sodium azide.

Basic Information

Clonality Polyclonal

Immunogen Information

Immunogen Synthesized peptide derived from part region of human protein**Specificity** PK1IP Polyclonal Antibody detects endogenous levels of protein.

Target Information

Gene name PAK1P1 PIP1 WDR84

Protein Name p21-activated protein kinase-interacting protein 1 (PAK/PLC-interacting protein 1) (hPIP1) (PAK1-interacting protein 1) (WD repeat-containing protein 84)

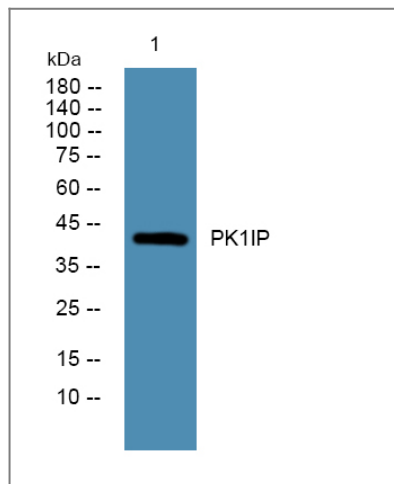
Organism	Gene ID	UniProt ID
Human	55003 ;	Q9NWT1 ;
Mouse		Q9DCE5 ;

Cellular Localization Nucleus, nucleolus .

Tissue specificity Expressed in brain, colon, heart, kidney, liver, lung, muscle, peripheral blood leukocytes, placenta, small intestine, spleen and thymus.

Function Function:Negatively regulates the PAK1 kinase. PAK1 is a member of the PAK kinase family, which have been shown to play a positive role in the regulation of signaling pathways involving MAPK8 and RELA. PAK1 exists as an inactive homodimer, which is activated by binding of small GTPases such as CDC42 to an N-terminal regulatory domain. PAK1IP1 also binds to the N-terminus of PAK1, and inhibits the specific activation of PAK1 by CDC42.,similarity:Contains 5 WD repeats.,subunit:Interacts with PAK1.,tissue specificity:Expressed in brain, colon, heart, kidney, liver, lung, muscle, peripheral blood leukocytes, placenta, small intestine, spleen and thymus.,

Validation Data



Western blot analysis of lysates from K562 cells, primary antibody was diluted at 1:1000, 4° over night

Contact information

Orders: order@immunoway.com
Support: tech@immunoway.com
Telephone: 877-594-3616 (Toll Free), 408-747-0185
Website: <http://www.immunoway.com>
Address: 2200 Ringwood Ave San Jose, CA 95131 USA



Please scan the QR code to access additional product information:
PK1IP Rabbit pAb

