

KT33A Rabbit pAb

CatalogNo: YN1777

Key Features

Host Species

- Rabbit

Reactivity

- Human, Mouse

Applications

- WB, ELISA

MW

- 44kD (Observed)

Isotype

- IgG

Recommended Dilution Ratios

WB 1:500-2000**ELISA 1:5000-20000**

Storage

Storage* -15°C to -25°C/1 year (Do not lower than -25°C)**Formulation** Liquid in PBS containing 50% glycerol, 0.5% BSA and 0.02% sodium azide.

Basic Information

Clonality Polyclonal

Immunogen Information

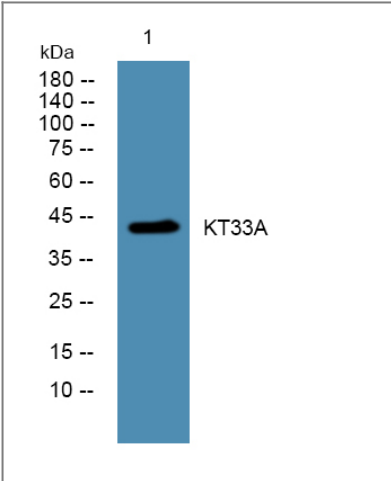
Immunogen Synthesized peptide derived from part region of human protein AA range: 276-326**Specificity** KT33A Polyclonal Antibody detects endogenous levels of protein.

Target Information

Gene name KRT33A HHA3-I HKA3A KRTHA3A

Protein Name	Keratin, type I cuticular Ha3-I (Hair keratin, type I Ha3-I) (Keratin-33A) (K33A)		
	Organism	Gene ID	UniProt ID
	Human	3883 ;	O76009 ;
	Mouse		Q8K0Y2 ;
Cellular Localization	extracellular space,intermediate filament,		
Tissue specificity	Expressed in the hair follicles.		
Function	miscellaneous:There are two types of hair/microfibrillar keratin, I (acidic) and II (neutral to basic).,similarity:Belongs to the intermediate filament family.,tissue specificity:Expressed in the hair follicle.,		

| Validation Data



Western blot analysis of lysates from KB cells, primary antibody was diluted at 1:1000, 4°over night

| Contact information

Orders: order@immunoway.com
 Support: tech@immunoway.com
 Telephone: 877-594-3616 (Toll Free), 408-747-0185
 Website: <http://www.immunoway.com>
 Address: 2200 Ringwood Ave San Jose, CA 95131 USA



Please scan the QR code
 to access additional
 product information:
KT33A Rabbit pAb