

## IGFL2 Rabbit pAb

CatalogNo: YN1763

### Key Features

#### Host Species

- Rabbit

#### Reactivity

- Human

#### Applications

- WB, ELISA

#### MW

- 13kD (Observed)

#### Isotype

- IgG

### Recommended Dilution Ratios

**WB 1:500-2000**

**ELISA 1:5000-20000**

### Storage

**Storage\*** -15°C to -25°C/1 year(Do not lower than -25°C)

**Formulation** Liquid in PBS containing 50% glycerol, 0.5% BSA and 0.02% sodium azide.

### Basic Information

**Clonality** Polyclonal

### Immunogen Information

**Immunogen** Synthesized peptide derived from part region of human protein AA range: 1-50

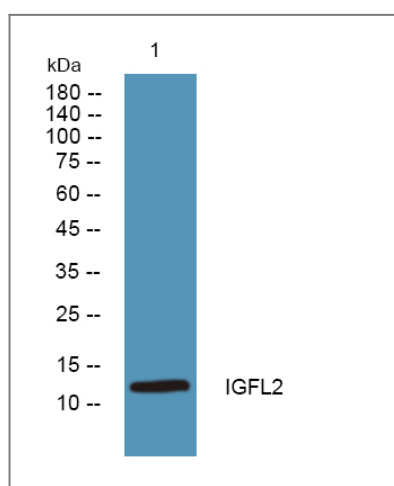
**Specificity** IGFL2 Polyclonal Antibody detects endogenous levels of protein.

### Target Information

**Gene name** IGFL2 UNQ645/PRO1275

<b>Protein Name</b>	Insulin growth factor-like family member 2		
	<b>Organism</b>	<b>Gene ID</b>	<b>UniProt ID</b>
	Human	<a href="#">147920</a> ;	<a href="#">Q6UWQ7</a> ;
<b>Cellular Localization</b>	Secreted .		
<b>Tissue specificity</b>	Detected in cerebellum, heart, placenta, spleen, stomach, testis and thymus.		
<b>Function</b>	similarity:Belongs to the IGFL family.,		

## Validation Data



Western blot analysis of lysates from SH-SY5Y cells, primary antibody was diluted at 1:1000, 4° over night

## Contact information

Orders: [order@immunoway.com](mailto:order@immunoway.com)  
 Support: [tech@immunoway.com](mailto:tech@immunoway.com)  
 Telephone: 877-594-3616 (Toll Free), 408-747-0185  
 Website: <http://www.immunoway.com>  
 Address: 2200 Ringwood Ave San Jose, CA 95131 USA



Please scan the QR code to access additional product information:  
**IGFL2 Rabbit pAb**

For Research Use Only. Not for Use in Diagnostic Procedures.

[Antibody](#) | [ELISA Kits](#) | [Protein](#) | [Reagents](#)