

## IFNA4 Rabbit pAb

CatalogNo: YN1760

### Key Features

#### Host Species

- Rabbit

#### Reactivity

- Human, Mouse

#### Applications

- WB, ELISA

#### MW

- 20kD (Observed)

#### Isotype

- IgG

### Recommended Dilution Ratios

**WB 1:500-2000**

**ELISA 1:5000-20000**

### Storage

**Storage\*** -15°C to -25°C/1 year (Do not lower than -25°C)

**Formulation** Liquid in PBS containing 50% glycerol, and 0.02% sodium azide.

### Basic Information

**Clonality** Polyclonal

### Immunogen Information

**Immunogen** Synthesized peptide derived from part region of human protein AA range: 87-137

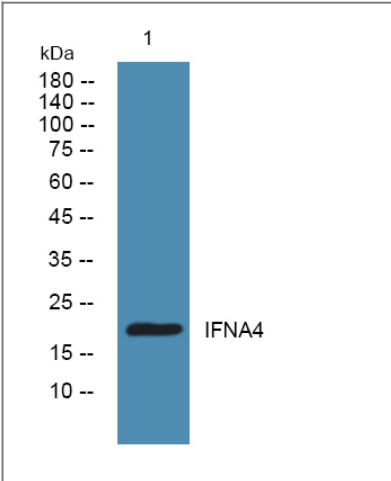
**Specificity** IFNA4 Polyclonal Antibody detects endogenous levels of protein.

### Target Information

**Gene name** IFNA4

<b>Protein Name</b>	Interferon alpha-4 (IFN-alpha-4) (Interferon alpha-4B) (Interferon alpha-76) (Interferon alpha-M1)		
	<b>Organism</b>	<b>Gene ID</b>	<b>UniProt ID</b>
	Human	<a href="#">3441</a> ;	<a href="#">P05014</a> ;
	Mouse		<a href="#">P07351</a> ;
<b>Cellular Localization</b>	Secreted.		
<b>Tissue specificity</b>	Brain,		
<b>Function</b>	Function:Produced by macrophages, IFN-alpha have antiviral activities. Interferon stimulates the production of two enzymes: a protein kinase and an oligoadenylate synthetase.,polymorphism:Two forms exist; alpha-4a (shown here) and alpha-4b. They seem to be equally abundant.,similarity:Belongs to the alpha/beta interferon family.,		

Validation Data



Western blot analysis of lysates from A431 cells, primary antibody was diluted at 1:1000, 4°over night

Contact information

Orders: order@immunoway.com  
Support: tech@immunoway.com  
Telephone: 877-594-3616 (Toll Free), 408-747-0185  
Website: http://www.immunoway.com  
Address: 2200 Ringwood Ave San Jose, CA 95131 USA



Please scan the QR code to access additional product information:  
**IFNA4 Rabbit pAb**