

## IBPL1 Rabbit pAb

CatalogNo: YN1758

### Key Features

#### Host Species

- Rabbit

#### Reactivity

- Human, Mouse

#### Applications

- WB, ELISA

#### MW

- 30kD (Observed)

#### Isotype

- IgG

### Recommended Dilution Ratios

**WB 1:500-2000**

**ELISA 1:5000-20000**

### Storage

**Storage\*** -15°C to -25°C/1 year (Do not lower than -25°C)

**Formulation** Liquid in PBS containing 50% glycerol, 0.5% BSA and 0.02% sodium azide.

### Basic Information

**Clonality** Polyclonal

### Immunogen Information

**Immunogen** Synthesized peptide derived from part region of human protein

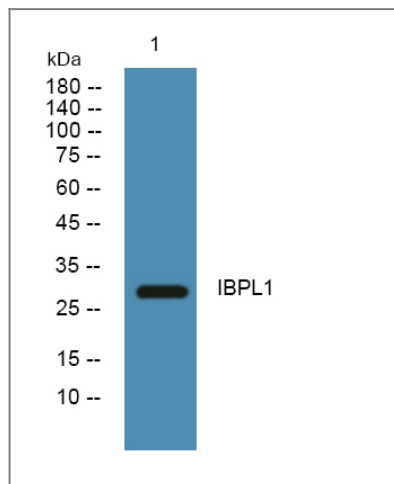
**Specificity** IBPL1 Polyclonal Antibody detects endogenous levels of protein.

### Target Information

**Gene name** IGFBPL1 IGFBPRP4

<b>Protein Name</b>	Insulin-like growth factor-binding protein-like 1 (IGFBP-related protein 10) (Insulin-like growth factor-binding-related protein 4) (IGFBP-rP4)		
	<b>Organism</b>	<b>Gene ID</b>	<b>UniProt ID</b>
	Human	<a href="#">347252;</a>	<a href="#">Q8WX77;</a>
	Mouse		<a href="#">Q80W15;</a>
<b>Cellular Localization</b>	Secreted .		
<b>Tissue specificity</b>	Expressed at the highest level in both brain and testis, with lower levels in the prostate, bladder and lung.		
<b>Function</b>	Function:IGF-binding proteins prolong the half-life of IGFs and have been shown to either inhibit or stimulate the growth promoting effects of the IGFs in cell culture. They alter the interaction of IGFs with their cell surface receptors (By similarity). May be a putative tumor suppressor protein.,induction:Down-regulated in multiple tumors.,similarity:Contains 1 Ig-like C2-type (immunoglobulin-like) domain.,similarity:Contains 1 IGFBP N-terminal domain.,similarity:Contains 1 Kazal-like domain.,tissue specificity:Expressed at the highest level in both brain and testis, with lower levels in the prostate, bladder and lung.,		

## Validation Data



Western blot analysis of lysates from SW480 cells, primary antibody was diluted at 1:1000, 4° over night

## Contact information

Orders: [order@immunoway.com](mailto:order@immunoway.com)  
 Support: [tech@immunoway.com](mailto:tech@immunoway.com)  
 Telephone: 877-594-3616 (Toll Free), 408-747-0185  
 Website: <http://www.immunoway.com>  
 Address: 2200 Ringwood Ave San Jose, CA 95131 USA



Please scan the QR code to access additional product information:  
**IBPL1 Rabbit pAb**

