

I20L2 Rabbit pAb

CatalogNo: YN1756

| Key Features

Host Species

- Rabbit

Reactivity

- Human,Rat,Mouse,

Applications

- WB,ELISA

MW

- 38kD (Observed)

Isotype

- IgG

| Recommended Dilution Ratios

WB 1:500-2000

ELISA 1:5000-20000

| Storage

Storage* -15°C to -25°C/1 year(Do not lower than -25°C)

Formulation Liquid in PBS containing 50% glycerol,0.5% BSA and 0.02% sodium azide.

| Basic Information

Clonality Polyclonal

| Immunogen Information

Immunogen Synthesized peptide derived from part region of human protein

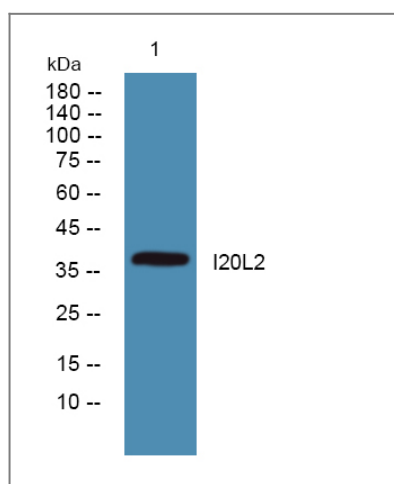
Specificity I20L2 Polyclonal Antibody detects endogenous levels of protein.

| Target Information

Gene name ISG20L2 HSD-38 HSD38

Protein Name	Interferon-stimulated 20 kDa exonuclease-like 2 (EC 3.1.-.-)		
	Organism	Gene ID	UniProt ID
	Human	81875;	Q9H9L3;
	Mouse		Q3U1G5;
	Rat		Q6AXU3;
Cellular Localization	Nucleus, nucleolus .		
Tissue specificity	Brain,Testis,		
Function	Function:3'-> 5'-exoribonuclease involved in ribosome biogenesis in the processing of the 12S pre-rRNA. Displays a strong specificity for a 3'-end containing a free hydroxyl group.,similarity:Contains 1 exonuclease domain.,		

Validation Data



Western blot analysis of lysates from SW480 cells, primary antibody was diluted at 1:1000, 4° over night

Contact information

Orders: order@immunoway.com
 Support: tech@immunoway.com
 Telephone: 877-594-3616 (Toll Free), 408-747-0185
 Website: <http://www.immunoway.com>
 Address: 2200 Ringwood Ave San Jose, CA 95131 USA



Please scan the QR code to access additional product information:
I20L2 Rabbit pAb