

FBF1 Rabbit pAb

CatalogNo: YN1741

Key Features

Host Species

- Rabbit

Reactivity

- Human, Mouse

Applications

- WB, ELISA

MW

- 124kD (Observed)

Isotype

- IgG

Recommended Dilution Ratios

WB 1:500-2000

ELISA 1:5000-20000

Storage

Storage* -15°C to -25°C/1 year (Do not lower than -25°C)

Formulation Liquid in PBS containing 50% glycerol, 0.5% BSA and 0.02% sodium azide.

Basic Information

Clonality Polyclonal

Immunogen Information

Immunogen Synthesized peptide derived from human protein . at AA range: 730-810

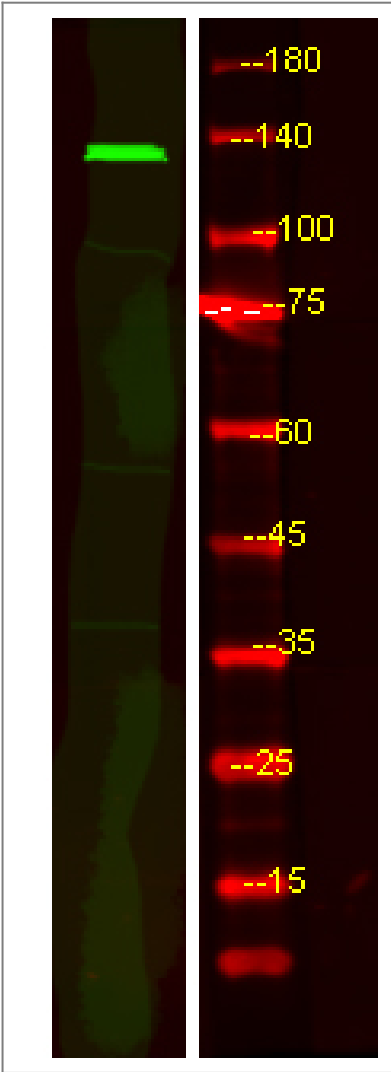
Specificity FBF1 Polyclonal Antibody detects endogenous levels of protein.

Target Information

Gene name FBF1 ALB KIAA1863

Protein Name	Fas-binding factor 1 (FBF-1) (Protein albatross)		
	Organism	Gene ID	UniProt ID
	Human	85302;	Q8TES7;
	Mouse		A2A870;
Cellular Localization	Cytoplasm, cytoskeleton, microtubule organizing center, centrosome, centriole. Cytoplasm, cytoskeleton, spindle pole. Cell junction. Localizes specifically to the distal appendage region of the centriole, which anchors the mother centriole to the plasma membrane. Localizes to the apical junction complex (AJC) in epithelial cells.		
Tissue specificity	Present in various epithelial cells (at protein level).		
Function	Caution:The sequence shown here is derived from an Ensembl automatic analysis pipeline and should be considered as preliminary data.,subunit:May interact with FAS cytoplasmic domain.,		

| Validation Data



Western Blot analysis of HEK293 lysis, using primary antibody at 1:1000 dilution. Secondary antibody(catalog#:RS23920) was diluted at 1:10000

| Contact information

Orders: order@immunoway.com
Support: tech@immunoway.com
Telephone: 877-594-3616 (Toll Free), 408-747-0185
Website: <http://www.immunoway.com>
Address: 2200 Ringwood Ave San Jose, CA 95131 USA



Please scan the QR code
to access additional
product information:
FBF1 Rabbit pAb

For Research Use Only. Not for Use in Diagnostic Procedures.

[Antibody](#) | [ELISA Kits](#) | [Protein](#) | [Reagents](#)