

## VSX1 Rabbit pAb

CatalogNo: YN1715

### | Key Features

#### Host Species

- Rabbit

#### Reactivity

- Human, Mouse

#### Applications

- WB, ELISA

#### MW

- 40kD (Observed)

#### Isotype

- IgG

### | Recommended Dilution Ratios

**WB 1:500-2000**

**ELISA 1:5000-20000**

### | Storage

**Storage\*** -15°C to -25°C/1 year (Do not lower than -25°C)

**Formulation** Liquid in PBS containing 50% glycerol, 0.5% BSA and 0.02% sodium azide.

### | Basic Information

**Clonality** Polyclonal

### | Immunogen Information

**Immunogen** Synthesized peptide derived from part region of human protein

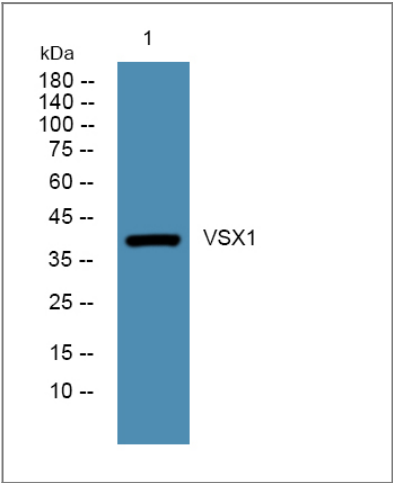
**Specificity** VSX1 Polyclonal Antibody detects endogenous levels of protein.

### | Target Information

**Gene name** VSX1 RINX

|                              |  |                         |                          |
|------------------------------|--|-------------------------|--------------------------|
| <b>Protein Name</b>          | Visual system homeobox 1 (Homeodomain protein RINX) (Retinal inner nuclear layer homeobox protein) (Transcription factor VSX1)   |                         |                          |
|                              | <b>Organism</b>  | <b>Gene ID</b>          | <b>UniProt ID</b>        |
|                              | Human  | <a href="#">30813</a> ; | <a href="#">Q9NZR4</a> ; |
|                              | Mouse  |                         | <a href="#">Q91V10</a> ; |
| <b>Cellular Localization</b> | Nucleus .  |                         |                          |
| <b>Tissue specificity</b>    | In the adult eye, expressed in lens, iris, ciliary body, choroid, optical nerve head and, most strongly, in retina, but not expressed in sclera and cornea. According to PubMed:11978762, expressed in adult retina but not in lens and cornea. Within adult retina, found exclusively in the inner nuclear layer. Isoform 1, isoform 2, isoform 3 and isoform 4 expressed in adult retina, but not in brain, heart, kidney, liver, lung, pancreas, placenta and skeletal muscle. Not expressed in thymus and spleen. Expressed in embryonic craniofacial tissue. Expressed in fetal (week 14) retina. Strongly expressed in neonatal retina, weakly in neonatal lens, choroid and cornea (day 1, 4; month 9).   |                         |                          |
| <b>Function</b>              | Alternative products:Additional isoforms seem to exist,Disease:Defects in VSX1 are a cause of keratoconus [MIM:148300]. It is a frequent corneal dystrophy with an incidence that varies from 50 to 230 per 100'000. The cornea assumes a conical shape as a result of a progressive non-inflammatory thinning of the corneal stroma. Keratoconus is most often an isolated sporadic condition with cases of autosomal dominant and autosomal recessive transmission.,Disease:Defects in VSX1 are a cause of posterior polymorphous corneal dystrophy (PPCD) [MIM:122000]. PPCD is a slowly progressive hereditary disorder of the corneal endothelium that leads to a variable degree of visual impairment usually in adulthood. PPCD is usually inherited as an autosomal dominant trait.,Function:Binds to the 37-bp core of the locus control region (LCR) of the red/green visual pigment gene cluster. May regulate the activity of the LCR and the cone opsin genes at earlier stages of development.,similarity:Belongs to the paired homeobox family.,similarity:Contains 1 CVC domain.,similarity:Contains 1 homeobox DNA-binding domain.,tissue specificity:Expressed in the embryonic craniofacial and exclusively in the retinal inner nuclear layer of the adult., |                         |                          |

## Validation Data



Western blot analysis of lysates from A431 cells, primary antibody was diluted at 1:1000, 4°over night

## | Contact information

Orders: order@immunoway.com  
Support: tech@immunoway.com  
Telephone: 877-594-3616 (Toll Free), 408-747-0185  
Website: <http://www.immunoway.com>  
Address: 2200 Ringwood Ave San Jose, CA 95131 USA



Please scan the QR code  
to access additional  
product information:  
**VSX1 Rabbit pAb**

---

For Research Use Only. Not for Use in Diagnostic Procedures.

[Antibody](#) | [ELISA Kits](#) | [Protein](#) | [Reagents](#)