

TOPRS Rabbit pAb

CatalogNo: YN1712

Key Features

Host Species

- Rabbit

Reactivity

- Human, Mouse

Applications

- WB, ELISA

MW

- 114kD (Observed)

Isotype

- IgG

Recommended Dilution Ratios

WB 1:500-2000

ELISA 1:5000-20000

Storage

Storage* -15°C to -25°C/1 year (Do not lower than -25°C)

Formulation Liquid in PBS containing 50% glycerol, 0.5% BSA and 0.02% sodium azide.

Basic Information

Clonality Polyclonal

Immunogen Information

Immunogen Synthesized peptide derived from part region of human protein

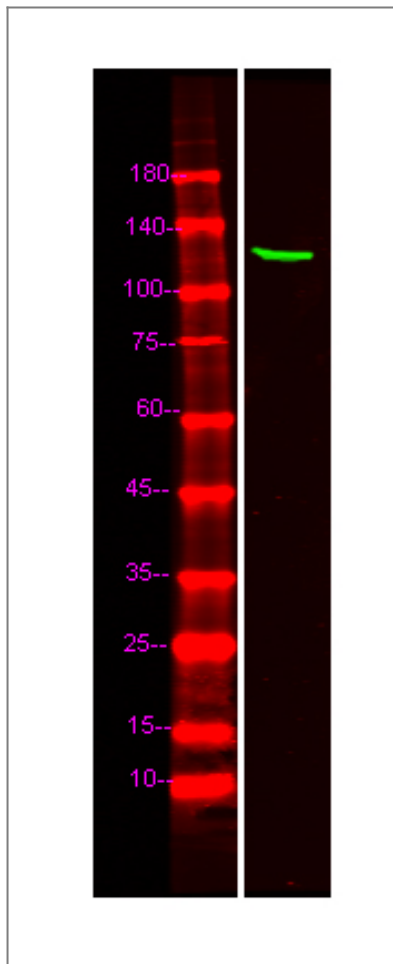
Specificity TOPRS Polyclonal Antibody detects endogenous levels of protein.

Target Information

Gene name TOPORS LUN TP53BPL

Protein Name	E3 ubiquitin-protein ligase Topors (SUMO1-protein E3 ligase Topors) (Topoisomerase I-binding RING finger protein) (Topoisomerase I-binding arginine/serine-rich protein) (Tumor suppressor p53-binding protein 3) (p53-binding protein 3) (p53BP3)		
	Organism	Gene ID	UniProt ID
	Human	10210 ;	Q9NS56 ;
	Mouse		Q80Z37 ;
Cellular Localization	Nucleus. Nucleus, PML body. Localizes to discrete nuclear foci which partly overlap with PML nuclear bodies. Targeted to PML nuclear bodies upon DNA damage.		
Tissue specificity	Expressed at highest levels in testis and at lower levels in adrenal gland, bone marrow, brain, colon, heart, kidney, liver, muscle, ovary, pancreas, placenta, prostate, skeletal muscle, skin, small intestine, spleen, stomach, testis, thymus, thyroid and uterus. Expressed in the alveolar epithelium of the lung. Expression is commonly decreased in colon adenocarcinomas and lung cancers.		
Function	<p>Caution:Was originally (PubMed:11278651) thought to bind to the palindromic consensus sequence 5'-TCCCAGCACTTTGGGA-3' and to regulate the transcription of numerous genes in the lung.,Disease:Defects in TOPORS are the cause of retinitis pigmentosa type 31 (RP31) [MIM:609923]. RP leads to degeneration of retinal photoreceptor cells. Patients typically have night vision blindness and loss of midperipheral visual field. As their condition progresses, they lose their far peripheral visual field and eventually central vision as well. RP31 inheritance is autosomal dominant.,Function:Functions as an ubiquitin-protein E3 ligase and as an E3 SUMO1-protein ligase. Can both ubiquitinate and sumoylate p53.,induction:By genotoxic agents such as cisplatin and camptothecin.,PTM:Sumoylated.,similarity:Contains 1 RING-type zinc finger.,subcellular location:Localizes to discrete nuclear foci which partly overlap with PML nuclear bodies.,subunit:Interacts with PARK7/DJ-1 (By similarity). Interacts with TOP1. Interacts with p53. Interacts with the SUMO1 conjugating enzyme UBE2I. Interacts with SUMO1.,tissue specificity:Expressed at highest levels in testis and at lower levels in adrenal gland, bone marrow, brain, colon, heart, kidney, liver, muscle, ovary, pancreas, placenta, prostate, skeletal muscle, skin, small intestine, spleen, stomach, testis, thymus, thyroid and uterus. Expressed in the alveolar epithelium of the lung. Expression is commonly decreased in colon adenocarcinomas and lung cancers.,</p>		

| Validation Data



Western Blot analysis of Hela lysis, using primary antibody at 1:1000 dilution. Secondary antibody(catalog#:RS23920) was diluted at 1:10000

Contact information

Orders: order@immunoway.com
Support: tech@immunoway.com
Telephone: 877-594-3616 (Toll Free), 408-747-0185
Website: <http://www.immunoway.com>
Address: 2200 Ringwood Ave San Jose, CA 95131 USA



Please scan the QR code to access additional product information:
TOPRS Rabbit pAb

For Research Use Only. Not for Use in Diagnostic Procedures.

[Antibody](#) | [ELISA Kits](#) | [Protein](#) | [Reagents](#)