

## S35C2 Rabbit pAb

CatalogNo: YN1710

### Key Features

**Host Species**

- Rabbit

**Reactivity**

- Human, Mouse

**Applications**

- WB, ELISA

**MW**

- 40kD (Observed)

**Isotype**

- IgG

### Recommended Dilution Ratios

**WB 1:500-2000****ELISA 1:5000-20000**

### Storage

**Storage\***

-15°C to -25°C/1 year (Do not lower than -25°C)

**Formulation**

Liquid in PBS containing 50% glycerol, and 0.02% sodium azide.

### Basic Information

**Clonality**

Polyclonal

### Immunogen Information

**Immunogen**

Synthesized peptide derived from part region of human protein

**Specificity**

S35C2 Polyclonal Antibody detects endogenous levels of protein.

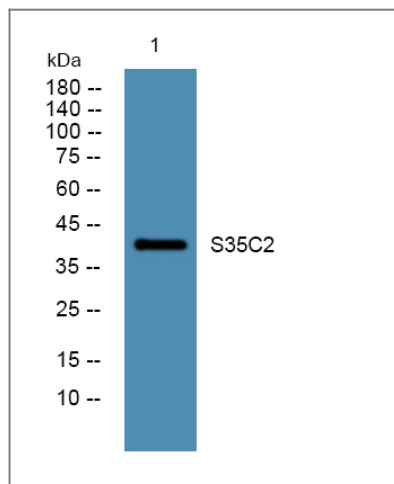
### Target Information

**Gene name**

SLC35C2 C20orf5 OVCOV1 CGI-15

<b>Protein Name</b>	Solute carrier family 35 member C2 (Ovarian cancer-overexpressed gene 1 protein)		
	<b>Organism</b>	<b>Gene ID</b>	<b>UniProt ID</b>
	Human	<a href="#">51006;</a>	<a href="#">Q9NQQ7;</a>
	Mouse		<a href="#">Q8VCX2;</a>
<b>Cellular Localization</b>	Membrane ; Multi-pass membrane protein . Golgi apparatus, cis-Golgi network membrane . Endoplasmic reticulum-Golgi intermediate compartment membrane .		
<b>Tissue specificity</b>	Ubiquitously expressed although the level of expression is tissue dependent. Overexpressed in ovarian cancer.		
<b>Function</b>	Function:May play an important role in the cellular response to tissue hypoxia.,induction:In hypoxic trophoblast cells.,similarity:Belongs to the TPT transporter family. SLC35C subfamily.,tissue specificity:Ubiquitously expressed although the level of expression is tissue dependent. Overexpressed in ovarian cancer.,		

## Validation Data



Western blot analysis of lysates from K562 cells, primary antibody was diluted at 1:1000, 4° over night

## Contact information

Orders: [order@immunoway.com](mailto:order@immunoway.com)  
 Support: [tech@immunoway.com](mailto:tech@immunoway.com)  
 Telephone: 877-594-3616 (Toll Free), 408-747-0185  
 Website: <http://www.immunoway.com>  
 Address: 2200 Ringwood Ave San Jose, CA 95131 USA



Please scan the QR code to access additional product information:  
**S35C2 Rabbit pAb**