

EBP2 Rabbit pAb

CatalogNo: YN1690

Key Features

Host Species

- Rabbit

Reactivity

- Human, Mouse

Applications

- WB, ELISA

MW

- 33kD (Observed)

Isotype

- IgG

Recommended Dilution Ratios

WB 1:500-2000

ELISA 1:5000-20000

Storage

Storage* -15°C to -25°C/1 year (Do not lower than -25°C)

Formulation Liquid in PBS containing 50% glycerol, 0.5% BSA and 0.02% sodium azide.

Basic Information

Clonality Polyclonal

Immunogen Information

Immunogen Synthesized peptide derived from human protein . at AA range: 140-220

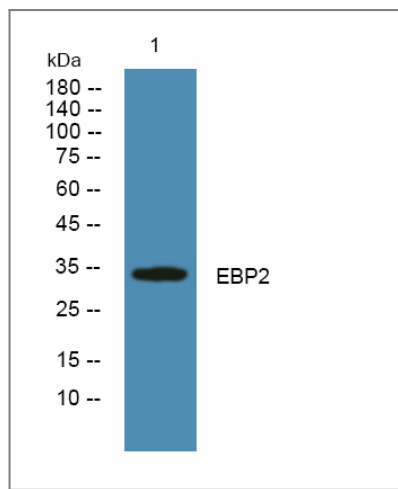
Specificity EBP2 Polyclonal Antibody detects endogenous levels of protein.

Target Information

Gene name EBNA1BP2 EBP2

Protein Name	Probable rRNA-processing protein EBP2 (EBNA1-binding protein 2) (Nucleolar protein p40)		
	Organism	Gene ID	UniProt ID
	Human	10969;	Q99848;
	Mouse		Q9D903;
Cellular Localization	Nucleus, nucleolus . Associated with the nucleolus in an RNA-dependent manner.		
Tissue specificity	Ubiquitous.		
Function	Function:Required for the processing of the 27S pre-rRNA.,similarity:Belongs to the EBP2 family.,subunit:Specifically interacts with EBV EBNA1. The EBNA1-EBP2 interaction is important for the stable segregation of EBV episomes during cell division.,tissue specificity:Ubiquitous.,		

| Validation Data



Western blot analysis of lysates from PC12 cells, primary antibody was diluted at 1:1000, 4°over night

| Contact information

Orders: order@immunoway.com

Support: tech@immunoway.com

Telephone: 877-594-3616 (Toll Free), 408-747-0185

Website: http://www.immunoway.com

Address: 2200 Ringwood Ave San Jose, CA 95131 USA



Please scan the QR code to access additional product information:

EBP2 Rabbit pAb