

ROAA Rabbit pAb

CatalogNo: YN1689

| Key Features

Host Species

- Rabbit

Reactivity

- Human, Mouse

Applications

- WB, ELISA

MW

- 36kD (Observed)

Isotype

- IgG

| Recommended Dilution Ratios

WB 1:500-2000

ELISA 1:5000-20000

| Storage

Storage* -15°C to -25°C/1 year (Do not lower than -25°C)

Formulation Liquid in PBS containing 50% glycerol, 0.5% BSA and 0.02% sodium azide.

| Basic Information

Clonality Polyclonal

| Immunogen Information

Immunogen Synthesized peptide derived from part region of human protein

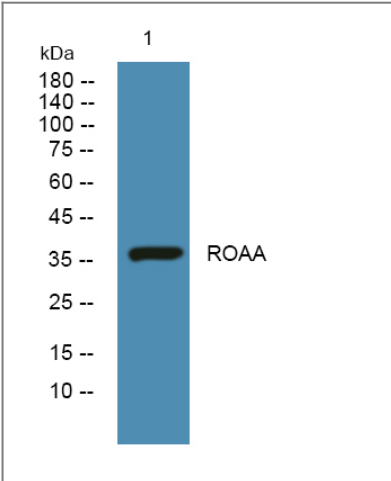
Specificity ROAA Polyclonal Antibody detects endogenous levels of protein.

| Target Information

Gene name HNRNPAB ABBP1 HNRPAB

Protein Name	Heterogeneous nuclear ribonucleoprotein A/B (hnRNP A/B) (APOBEC1-binding protein 1) (ABBP-1)		
	Organism	Gene ID	UniProt ID
	Human	3182;	Q99729;
	Mouse		Q99020;
Cellular Localization	Nucleus . Cytoplasm . Localized in cytoplasmic mRNP granules containing untranslated mRNAs.		
Tissue specificity	Ubiquitous.		
Function	Function: Binds single-stranded RNA. Has a high affinity for G-rich and U-rich regions of hnRNA. Also binds to APOB mRNA transcripts around the RNA editing site.,PTM: Dimethylation at Arg-322 is probably asymmetric.,similarity: Contains 2 RRM (RNA recognition motif) domains.,subunit: Interacts with APOBEC1.,tissue specificity: Ubiquitous.,		

| Validation Data



Western blot analysis of lysates from U2OS cells, primary antibody was diluted at 1:1000, 4°over night

| Contact information

Orders: order@immunoway.com
 Support: tech@immunoway.com
 Telephone: 877-594-3616 (Toll Free), 408-747-0185
 Website: <http://www.immunoway.com>
 Address: 2200 Ringwood Ave San Jose, CA 95131 USA



Please scan the QR code
 to access additional
 product information:
ROAA Rabbit pAb