

ARL11 Rabbit pAb

CatalogNo: YN1676

| Key Features

Host Species

- Rabbit

Reactivity

- Human,Rat,Mouse,

Applications

- WB,ELISA

MW

- 21kD (Observed)

Isotype

- IgG

| Recommended Dilution Ratios

WB 1:500-2000

ELISA 1:5000-20000

| Storage

Storage* -15°C to -25°C/1 year(Do not lower than -25°C)

Formulation Liquid in PBS containing 50% glycerol,0.5% BSA and 0.02% sodium azide.

| Basic Information

Clonality Polyclonal

| Immunogen Information

Immunogen Synthesized peptide derived from human protein . at AA range: 140-220

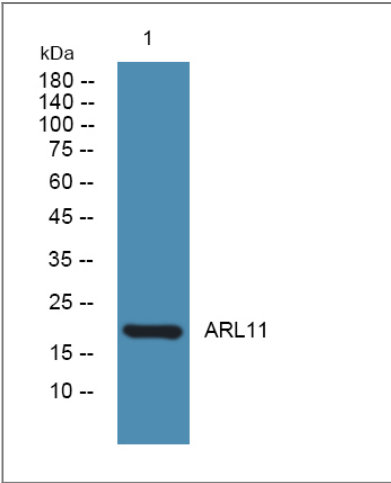
Specificity ARL11 Polyclonal Antibody detects endogenous levels of protein.

| Target Information

Gene name ARL11 ARLTS1

Protein Name	ADP-ribosylation factor-like protein 11 (ADP-ribosylation factor-like tumor suppressor protein 1)		
	Organism	Gene ID	UniProt ID
	Human	115761 ;	Q969Q4 ;
	Mouse		Q6P3A9 ;
	Rat		Q5BK71 ;
Cellular Localization	intracellular,		
Tissue specificity	Expressed in lung and leukocytes.		
Function	Disease:Defects in ARL11 may be a cause of susceptibility to chronic lymphocytic leukemia (CLL) [MIM:151400].,Function:May play a role in apoptosis. May act as a tumor suppressor.,similarity:Belongs to the small GTPase superfamily. Arf family.,tissue specificity:Expressed in lung and leukocytes.,		

Validation Data



Western blot analysis of lysates from K562 cells, primary antibody was diluted at 1:1000, 4°over night

Contact information

Orders: order@immunoway.com
Support: tech@immunoway.com
Telephone: 877-594-3616 (Toll Free), 408-747-0185
Website: http://www.immunoway.com
Address: 2200 Ringwood Ave San Jose, CA 95131 USA



Please scan the QR code to access additional product information:
ARL11 Rabbit pAb

