

MAGA8 Rabbit pAb

CatalogNo: YN1600

Key Features

Host Species

- Rabbit

Reactivity

- Human

Applications

- WB,ELISA

MW

- 34kD (Observed)

Isotype

- IgG

Storage

Storage* -15°C to -25°C/1 year(Do not lower than -25°C)**Formulation** Liquid in PBS containing 50% glycerol,0.5% BSA and 0.02% sodium azide.

Recommended Dilution Ratios

WB 1:500-2000**ELISA 1:5000-20000**

Basic Information

Clonality Polyclonal

Immunogen Information

Immunogen Synthesized peptide derived from human protein . at AA range: 1-80**Specificity** MAGA8 Polyclonal Antibody detects endogenous levels of protein.

Target Information

Gene name MAGEA8 MAGE8

Protein Name Melanoma-associated antigen 8 (Cancer/testis antigen 1.8) (CT1.8) (MAGE-8 antigen)

Organism

Human

Gene ID

[4107](#);

UniProt ID

[P43361](#);

Cellular Localization

integral component of membrane,

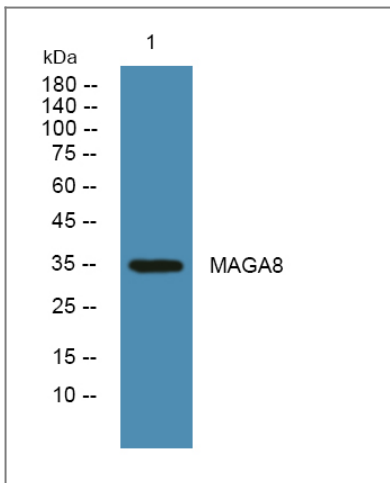
Tissue specificity

Expressed in many tumors of several types, such as melanoma, head and neck squamous cell carcinoma, lung carcinoma and breast carcinoma, but not in normal tissues except for testis and placenta.

Function

Function:Not known, though may play a role in embryonal development and tumor transformation or aspects of tumor progression.,similarity:Contains 1 MAGE domain.,tissue specificity:Expressed in many tumors of several types, such as melanoma, head and neck squamous cell carcinoma, lung carcinoma and breast carcinoma, but not in normal tissues except for testis and placenta.,

Validation Data



Western blot analysis of lysates from K562 cells, primary antibody was diluted at 1:1000, 4° over night

Contact information

Orders: order@immunoway.com
Support: tech@immunoway.com
Telephone: 877-594-3616 (Toll Free), 408-747-0185
Website: <http://www.immunoway.com>
Address: 2200 Ringwood Ave San Jose, CA 95131 USA



Please scan the QR code to access additional product information:
MAGA8 Rabbit pAb