

MAGA2 Rabbit pAb

CatalogNo: YN1597

Key Features

Host Species

- Rabbit

Reactivity

- Human

Applications

- WB,ELISA

MW

- 34kD (Observed)

Isotype

- IgG

Recommended Dilution Ratios

WB 1:500-2000**ELISA 1:5000-20000**

Storage

Storage* -15°C to -25°C/1 year(Do not lower than -25°C)**Formulation** Liquid in PBS containing 50% glycerol,0.5% BSA and 0.02% sodium azide.

Basic Information

Clonality Polyclonal

Immunogen Information

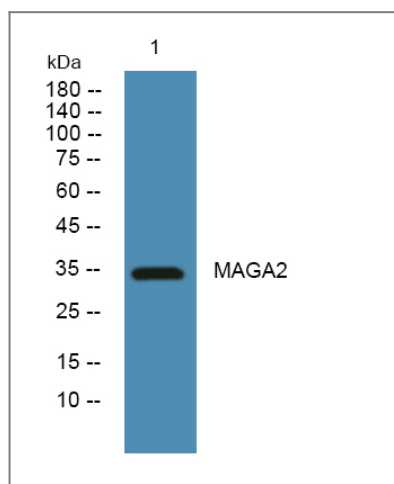
Immunogen Synthesized peptide derived from human protein . at AA range: 50-130**Specificity** MAGA2 Polyclonal Antibody detects endogenous levels of protein.

Target Information

Gene name MAGA2 MAGE2 MAGEA2A; MAGEA2B MAGE2 MAGEA2

Protein Name	Melanoma-associated antigen 2 (Cancer/testis antigen 1.2) (CT1.2) (MAGE-2 antigen)		
	Organism	Gene ID	UniProt ID
	Human	266740 ;	P43356 ;
Cellular Localization	Nucleus. Nucleus, PML body.		
Tissue specificity	Expressed in many tumors of several types, such as melanoma, head and neck squamous cell carcinoma, lung carcinoma and breast carcinoma, but not in normal tissues except for testes.		
Function	Function:Not known, though may play a role in embryonal development and tumor transformation or aspects of tumor progression. Antigen recognized on a melanoma by autologous cytolytic T-lymphocytes.,similarity:Contains 1 MAGE domain.,tissue specificity:Expressed in many tumors of several types, such as melanoma, head and neck squamous cell carcinoma, lung carcinoma and breast carcinoma, but not in normal tissues except for testes.,		

Validation Data



Western blot analysis of lysates from A431 cells, primary antibody was diluted at 1:1000, 4° over night

Contact information

Orders: order@immunoway.com
 Support: tech@immunoway.com
 Telephone: 877-594-3616 (Toll Free), 408-747-0185
 Website: <http://www.immunoway.com>
 Address: 2200 Ringwood Ave San Jose, CA 95131 USA



Please scan the QR code to access additional product information:
MAGA2 Rabbit pAb

