

B2L10 Rabbit pAb

CatalogNo: YN1555

| Key Features

Host Species

- Rabbit

Reactivity

- Human,Rat,Mouse,

Applications

- WB,ELISA

MW

- 21kD (Observed)

Isotype

- IgG

| Recommended Dilution Ratios

WB 1:500-2000

ELISA 1:5000-20000

| Storage

Storage* -15°C to -25°C/1 year(Do not lower than -25°C)

Formulation Liquid in PBS containing 50% glycerol,0.5% BSA and 0.02% sodium azide.

| Basic Information

Clonality Polyclonal

| Immunogen Information

Immunogen Synthesized peptide derived from human protein . at AA range: 70-150

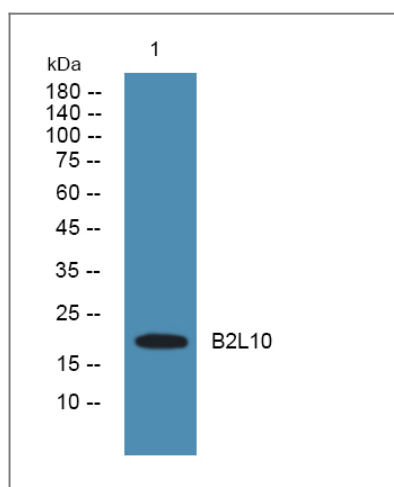
Specificity B2L10 Polyclonal Antibody detects endogenous levels of protein.

| Target Information

Gene name BCL2L10 BCLB

Protein Name	Bcl-2-like protein 10 (Bcl2-L-10) (Anti-apoptotic protein NrH) (Apoptosis regulator Bcl-B)		
	Organism	Gene ID	UniProt ID
	Human	10017;	Q9HD36;
	Mouse		Q9Z0F3;
	Rat		Q99M66;
Cellular Localization	Mitochondrion . Nucleus membrane . Endoplasmic reticulum . Cytoplasm, cytoskeleton, spindle . Localizes to mitochondria-associated endoplasmic reticulum membranes (MAMs) (PubMed:27995898). Localization to MAMs is greatly reduced under apoptotic stress conditions (PubMed:27995898). .		
Tissue specificity	Widely expressed in adult tissues. Preferentially expressed in lung, liver and kidney.		
Function	Function:Promotes cell survival. Suppresses apoptosis induced by BAX but not BAK.,similarity:Belongs to the Bcl-2 family.,subunit:Binds to Bcl-2, Bcl-X and BAX. Interacts with APAF1.,tissue specificity:Widely expressed in adult tissues. Preferentially expressed in the lungs, the liver and the kidneys.,		

Validation Data



Western blot analysis of lysates from SH-SY5Y cells, primary antibody was diluted at 1:1000, 4°over night

Contact information

Orders: order@immunoway.com
 Support: tech@immunoway.com
 Telephone: 877-594-3616 (Toll Free), 408-747-0185
 Website: <http://www.immunoway.com>
 Address: 2200 Ringwood Ave San Jose, CA 95131 USA



Please scan the QR code to access additional product information:
B2L10 Rabbit pAb

