

## ZN462 Rabbit pAb

CatalogNo: YN1544

### Key Features

#### Host Species

- Rabbit

#### Reactivity

- Human, Mouse

#### Applications

- IHC, IF

#### MW

- 275kD (Observed)

#### Isotype

- IgG

### Recommended Dilution Ratios

IHC 1:50-300

IF 1:50-200

### Storage

**Storage\*** -15°C to -25°C/1 year (Do not lower than -25°C)

**Formulation** Liquid in PBS containing 50% glycerol, 0.5% BSA and 0.02% sodium azide.

### Basic Information

**Clonality** Polyclonal

### Immunogen Information

**Immunogen** Synthesized peptide derived from part region of human protein

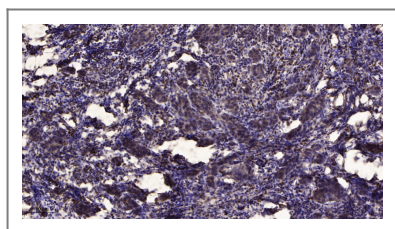
**Specificity** ZN462 Polyclonal Antibody detects endogenous levels of protein.

### Target Information

**Gene name** ZNF462 KIAA1803

<b>Protein Name</b>	Zinc finger protein 462		
	<b>Organism</b>	<b>Gene ID</b>	<b>UniProt ID</b>
	Human	<a href="#">58499;</a>	<a href="#">Q96JM2;</a>
<b>Cellular Localization</b>	Nucleus .		
<b>Tissue specificity</b>	Brain,Endometrium carcinoma cell line,Liver,Melanoma,Placenta,Testis,		
<b>Function</b>	Function:May be involved in transcriptional regulation.,PTM:Phosphorylated upon DNA damage, probably by ATM or ATR.,similarity:Contains 27 C2H2-type zinc fingers.,		

## Validation Data



Immunohistochemical analysis of paraffin-embedded human Breast cancer. 1, Antibody was diluted at 1:200(4° overnight). 2, Tris-EDTA,pH9.0 was used for antigen retrieval. 3,Secondary antibody was diluted at 1:200(room temperature, 45min).

## Contact information

Orders: [order@immunoway.com](mailto:order@immunoway.com)  
 Support: [tech@immunoway.com](mailto:tech@immunoway.com)  
 Telephone: 877-594-3616 (Toll Free), 408-747-0185  
 Website: <http://www.immunoway.com>  
 Address: 2200 Ringwood Ave San Jose, CA 95131 USA



Please scan the QR code to access additional product information:  
**ZN462 Rabbit pAb**

For Research Use Only. Not for Use in Diagnostic Procedures.

[Antibody](#) | [ELISA Kits](#) | [Protein](#) | [Reagents](#)