

ZFHX2 Rabbit pAb

CatalogNo: YN1538

Key Features

Host Species

- Rabbit

Reactivity

- Human, Mouse

Applications

- IHC, IF

MW

- 282kD (Observed)

Isotype

- IgG

Recommended Dilution Ratios

IHC 1:50-300

IF 1:50-200

Storage

Storage* -15°C to -25°C/1 year (Do not lower than -25°C)

Formulation Liquid in PBS containing 50% glycerol, 0.5% BSA and 0.02% sodium azide.

Basic Information

Clonality Polyclonal

Immunogen Information

Immunogen Synthesized peptide derived from part region of human protein

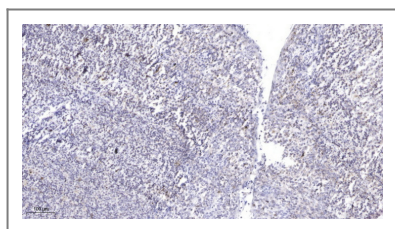
Specificity ZFHX2 Polyclonal Antibody detects endogenous levels of protein.

Target Information

Gene name ZFHX2 KIAA1056 KIAA1762 ZNF409

Protein Name	Zinc finger homeobox protein 2 (Zinc finger homeodomain protein 2) (ZFH-2)		
	Organism	Gene ID	UniProt ID
	Human	85446;	Q9C0A1;
Cellular Localization	Nucleus .		
Tissue specificity	Brain,		
Function	Function:May be involved in transcriptional regulation.,similarity:Contains 3 homeobox DNA-binding domains.,similarity:Contains 6 C2H2-type zinc fingers.,		

| Validation Data



Immunohistochemical analysis of paraffin-embedded human tonsil. 1, Antibody was diluted at 1:200(4° overnight). 2, Tris-EDTA,pH9.0 was used for antigen retrieval. 3,Secondary antibody was diluted at 1:200(room temperature, 45min).

| Contact information

Orders: order@immunoway.com
 Support: tech@immunoway.com
 Telephone: 877-594-3616 (Toll Free), 408-747-0185
 Website: <http://www.immunoway.com>
 Address: 2200 Ringwood Ave San Jose, CA 95131 USA



Please scan the QR code to access additional product information:
ZFH2 Rabbit pAb

For Research Use Only. Not for Use in Diagnostic Procedures.

[Antibody](#) | [ELISA Kits](#) | [Protein](#) | [Reagents](#)