

CCG8 Rabbit pAb

CatalogNo: YN1524

Key Features

Host Species

- Rabbit

Reactivity

- Human, Mouse, Rat

Applications

- WB, ELISA

MW

- 46kD (Observed)

Isotype

- IgG

Recommended Dilution Ratios

WB 1:500-2000

ELISA 1:5000-20000

Storage

Storage* -15°C to -25°C/1 year (Do not lower than -25°C)

Formulation Liquid in PBS containing 50% glycerol, 0.5% BSA and 0.02% sodium azide.

Basic Information

Clonality Polyclonal

Immunogen Information

Immunogen Synthesized peptide derived from human protein . at AA range: 140-220

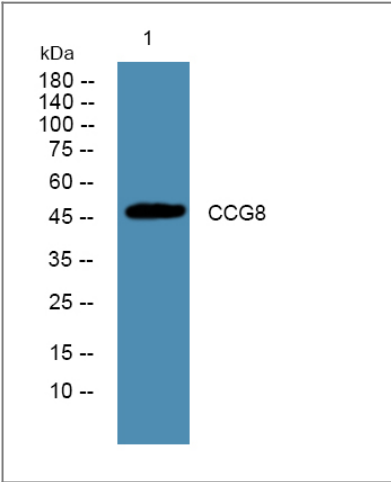
Specificity CCG8 Polyclonal Antibody detects endogenous levels of protein.

Target Information

Gene name CACNG8 CACNG6

| | | | |
|------------------------------|--|------------------------|-------------------------|
| Protein Name | Voltage-dependent calcium channel gamma-8 subunit (Neuronal voltage-gated calcium channel gamma-8 subunit) (Transmembrane AMPAR regulatory protein gamma-8) (TARP gamma-8) | | |
| | Organism | Gene ID | UniProt ID |
| | Human | 59283; | Q8WXS5; |
| | Mouse | | Q8VHW2; |
| | Rat | | Q8VHW5; |
| Cellular Localization | Cell membrane ; Multi-pass membrane protein . Cell junction, synapse, postsynaptic density membrane . | | |
| Tissue specificity | Detected in heart left ventricle. | | |
| Function | Function:Thought to stabilize the calcium channel in an inactivated (closed) state.,similarity:Belongs to the PMP-22/EMP/MP20 family. CACNG subfamily.,subunit:The L-type calcium channel is composed of five subunits: alpha-1, alpha-2/delta, beta and gamma., | | |

Validation Data



Western blot analysis of lysates from A431 cells, primary antibody was diluted at 1:1000, 4°over night

Contact information

Orders: order@immunoway.com
 Support: tech@immunoway.com
 Telephone: 877-594-3616 (Toll Free), 408-747-0185
 Website: <http://www.immunoway.com>
 Address: 2200 Ringwood Ave San Jose, CA 95131 USA



Please scan the QR code
 to access additional
 product information:
CCG8 Rabbit pAb

