

## SEC20 Rabbit pAb

CatalogNo: YN1521

### Key Features

#### Host Species

- Rabbit

#### Reactivity

- Human,Rat,Mouse

#### Applications

- WB,ELISA

#### MW

- 25kD (Observed)

#### Isotype

- IgG

### Recommended Dilution Ratios

WB 1:500-2000

ELISA 1:5000-20000

### Storage

**Storage\*** -15°C to -25°C/1 year(Do not lower than -25°C)

**Formulation** Liquid in PBS containing 50% glycerol,0.5% BSA and 0.02% sodium azide.

### Basic Information

**Clonality** Polyclonal

### Immunogen Information

**Immunogen** Synthesized peptide derived from part region of human protein

**Specificity** SEC20 Polyclonal Antibody detects endogenous levels of protein.

### Target Information

**Gene name** BNIP1 NIP1 SEC20L TRG8

**Protein Name** Vesicle transport protein SEC20 (BCL2/adenovirus E1B 19 kDa protein-interacting protein 1) (Transformation-related gene 8 protein) (TRG-8)

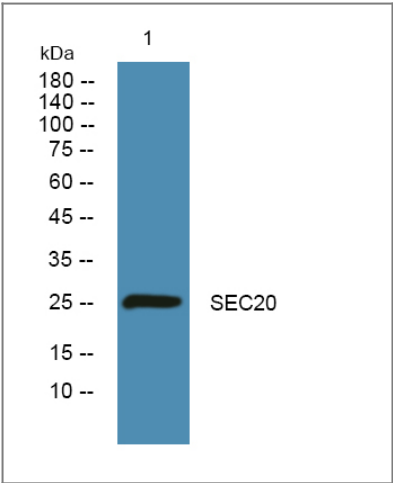
Organism	Gene ID	UniProt ID
Human	<a href="#">662;</a>	<a href="#">Q12981;</a>
Mouse		<a href="#">Q6QD59;</a>
Rat		<a href="#">Q8VHI8;</a>

**Cellular Localization** Endoplasmic reticulum membrane ; Single-pass type IV membrane protein . Mitochondrion membrane ; Single-pass type IV membrane protein . Localization to the mitochondrion is regulated by RNF186. .

**Tissue specificity** Isoform 1 is highly expressed in heart, brain, liver skeletal muscle and pancreas. Isoform 3 is moderately expressed in placenta, lung and kidney. Isoform 4 is highly expressed in testis and small intestine.

**Function** Alternative products:Additional isoforms seem to exist,Function:SNARE that may be involved in targeting and fusion of Golgi-derived retrograde transport vesicles with the ER. Required for maintenance of ER network. Implicated in the suppression of cell death.,miscellaneous:Silencing of BNIP1 disrupts ER morphology.,similarity:Belongs to the SEC20 family.,subunit:Component of a SNARE complex consisting of STX18, USE1L, BNIP1/SEC20L and SEC22B. Interacts directly with STX18, RINT1/TIP20L and NAPA. Interacts with ZW10 through RINT1. Interacts with BCL2 and adenovirus E1B 19 kDa protein.,tissue specificity:High levels of isoform 1 in heart, brain, liver skeletal muscle and pancreas. Moderate levels of isoform 3 in placenta, lung and kidney. High levels of isoform 4 in testis and small intestine.,

## Validation Data



Western blot analysis of lysates from Jurkat cells, primary antibody was diluted at 1:1000, 4°over night

## Contact information

Orders: order@immunoway.com  
Support: tech@immunoway.com  
Telephone: 877-594-3616 (Toll Free), 408-747-0185  
Website: http://www.immunoway.com  
Address: 2200 Ringwood Ave San Jose, CA 95131 USA



Please scan the QR code  
to access additional  
product information:  
**SEC20 Rabbit pAb**

---

For Research Use Only. Not for Use in Diagnostic Procedures.

[Antibody](#) | [ELISA Kits](#) | [Protein](#) | [Reagents](#)