

VATG2 Rabbit pAb

CatalogNo: YN1513

Key Features

Host Species

- Rabbit

Reactivity

- Human, Mouse

Applications

- WB, ELISA

MW

- 12kD (Observed)

Isotype

- IgG

Recommended Dilution Ratios

WB 1:500-2000

ELISA 1:5000-20000

Storage

Storage* -15°C to -25°C/1 year (Do not lower than -25°C)

Formulation Liquid in PBS containing 50% glycerol, and 0.02% sodium azide.

Basic Information

Clonality Polyclonal

Immunogen Information

Immunogen Synthesized peptide derived from part region of human protein AA range: 1-50

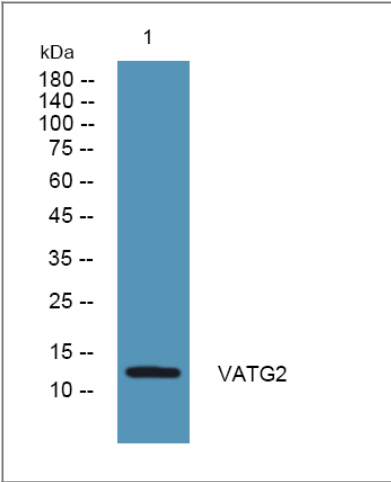
Specificity VATG2 Polyclonal Antibody detects endogenous levels of protein.

Target Information

Gene name ATP6V1G2 ATP6G ATP6G2 NG38

Protein Name	V-type proton ATPase subunit G 2 (V-ATPase subunit G 2) (V-ATPase 13 kDa subunit 2) (Vacuolar proton pump subunit G 2)		
	Organism	Gene ID	UniProt ID
	Human	534;	O95670;
	Mouse		Q9WTT4;
Cellular Localization	Melanosome . Cytoplasmic vesicle, clathrin-coated vesicle membrane ; Peripheral membrane protein . Highly enriched in late-stage melanosomes. .		
Tissue specificity	Brain.		
Function	Function:Catalytic subunit of the peripheral V1 complex of vacuolar ATPase (V-ATPase). V-ATPase is responsible for acidifying a variety of intracellular compartments in eukaryotic cells.,similarity:Belongs to the V-ATPase G subunit family.,subcellular location:Highly enriched in late-stage melanosomes.,subunit:V-ATPase is an heteromultimeric enzyme composed of a peripheral catalytic V1 complex (components A to H) attached to an integral membrane V0 proton pore complex (components: a, c, c', c'' and d).,tissue specificity:Brain.,		

Validation Data



Western blot analysis of lysates from K562 cells, primary antibody was diluted at 1:1000, 4°over night

Contact information

Orders: order@immunoway.com
Support: tech@immunoway.com
Telephone: 877-594-3616 (Toll Free), 408-747-0185
Website: http://www.immunoway.com
Address: 2200 Ringwood Ave San Jose, CA 95131 USA



Please scan the QR code to access additional product information:
VATG2 Rabbit pAb

