

## VATF Rabbit pAb

CatalogNo: YN1512

### Key Features

#### Host Species

- Rabbit

#### Reactivity

- Human, Mouse, Rat

#### Applications

- WB, ELISA

#### MW

- 13kD (Observed)

#### Isotype

- IgG

### Recommended Dilution Ratios

WB 1:500-2000

ELISA 1:5000-20000

### Storage

**Storage\*** -15°C to -25°C/1 year (Do not lower than -25°C)

**Formulation** Liquid in PBS containing 50% glycerol, 0.5% BSA and 0.02% sodium azide.

### Basic Information

**Clonality** Polyclonal

### Immunogen Information

**Immunogen** Synthesized peptide derived from part region of human protein AA range: 1-50

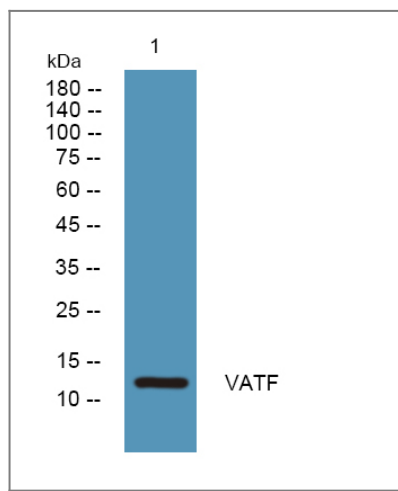
**Specificity** VATF Polyclonal Antibody detects endogenous levels of protein.

### Target Information

**Gene name** ATP6V1F ATP6S14 VATF

<b>Protein Name</b>	V-type proton ATPase subunit F (V-ATPase subunit F) (V-ATPase 14 kDa subunit) (Vacuolar proton pump subunit F)		
	<b>Organism</b>	<b>Gene ID</b>	<b>UniProt ID</b>
	Human	<a href="#">9296;</a>	<a href="#">Q16864;</a>
	Mouse		<a href="#">Q9D1K2;</a>
	Rat		<a href="#">P50408;</a>
<b>Cellular Localization</b>	Cytoplasmic vesicle, secretory vesicle, synaptic vesicle membrane ; Peripheral membrane protein . Cytoplasmic vesicle, clathrin-coated vesicle membrane ; Peripheral membrane protein .		
<b>Tissue specificity</b>	Brain,Breast,Fetal brain,		
<b>Function</b>	Function:Subunit of the peripheral V1 complex of vacuolar ATPase essential for assembly or catalytic function. V-ATPase is responsible for acidifying a variety of intracellular compartments in eukaryotic cells.,similarity:Belongs to the V-ATPase F subunit family.,subunit:V-ATPase is an heteromultimeric enzyme composed of a peripheral catalytic V1 complex (components A to H) attached to an integral membrane V0 proton pore complex (components: a, c, c', c'' and d).,		

## | Validation Data



Western blot analysis of lysates from K562 cells, primary antibody was diluted at 1:1000, 4°over night

## | Contact information

Orders: [order@immunoway.com](mailto:order@immunoway.com)  
 Support: [tech@immunoway.com](mailto:tech@immunoway.com)  
 Telephone: 877-594-3616 (Toll Free), 408-747-0185  
 Website: <http://www.immunoway.com>  
 Address: 2200 Ringwood Ave San Jose, CA 95131 USA



Please scan the QR code  
 to access additional  
 product information:  
**VATF Rabbit pAb**

