

VA0D2 Rabbit pAb

CatalogNo: YN1510

| Key Features

Host Species

- Rabbit

Reactivity

- Human,Rat,Mouse

Applications

- WB,ELISA

MW

- 38kD (Observed)

Isotype

- IgG

| Recommended Dilution Ratios

WB 1:500-2000

ELISA 1:5000-20000

| Storage

Storage* -15°C to -25°C/1 year(Do not lower than -25°C)

Formulation Liquid in PBS containing 50% glycerol,0.5% BSA and 0.02% sodium azide.

| Basic Information

Clonality Polyclonal

| Immunogen Information

Immunogen Synthesized peptide derived from part region of human protein

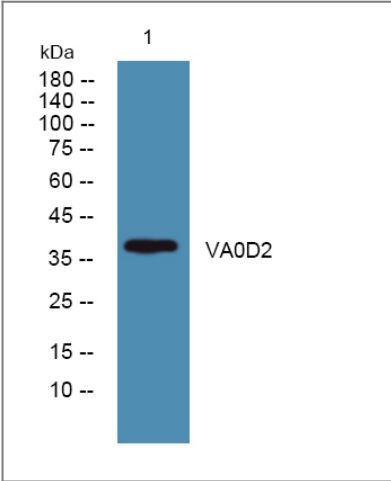
Specificity VA0D2 Polyclonal Antibody detects endogenous levels of protein.

| Target Information

Gene name ATP6V0D2

Protein Name	V-type proton ATPase subunit d 2 (V-ATPase subunit d 2) (Vacuolar proton pump subunit d 2)		
	Organism	Gene ID	UniProt ID
	Human	245972;	Q8N8Y2;
	Mouse		Q80SY3;
	Rat		Q5FVL0;
Cellular Localization	lysosomal membrane,early endosome,endosome membrane,membrane,apical plasma membrane,vacuolar proton-transporting V-type ATPase complex,phagocytic vesicle membrane,proton-transporting V-type ATPase, V0 domain,plasma membrane proton-transporting V		
Tissue specificity	Kidney, osteoclast and lung.		
Function	<p>Function:Subunit of the integral membrane V0 complex of vacuolar ATPase. Vacuolar ATPase is responsible for acidifying a variety of intracellular compartments in eukaryotic cells, thus providing most of the energy required for transport processes in the vacuolar system. May play a role in coupling of proton transport and ATP hydrolysis.,similarity:Belongs to the V-ATPase V0D/AC39 subunit family.,subunit:V-ATPase is an heteromultimeric enzyme composed of a peripheral catalytic V1 complex (components A to H) attached to an integral membrane V0 proton pore complex (components: a, c, c', c'' and d).,tissue specificity:Kidney, osteoclast and lung.,</p>		

Validation Data



Western blot analysis of lysates from SW480 cells, primary antibody was diluted at 1:1000, 4°over night

Contact information

Orders: order@immunoway.com
Support: tech@immunoway.com
Telephone: 877-594-3616 (Toll Free), 408-747-0185
Website: <http://www.immunoway.com>
Address: 2200 Ringwood Ave San Jose, CA 95131 USA



Please scan the QR code
to access additional
product information:
VA0D2 Rabbit pAb

For Research Use Only. Not for Use in Diagnostic Procedures.

[Antibody](#) | [ELISA Kits](#) | [Protein](#) | [Reagents](#)