

## VATA Rabbit pAb

CatalogNo: YN1507

Orthogonal Validated 

### Key Features

**Host Species**

- Rabbit

**Reactivity**

- Human, Mouse, Swine

**Applications**

- WB, ELISA

**MW**

- 67kD (Observed)

**Isotype**

- IgG

### Recommended Dilution Ratios

**WB 1:500-2000****ELISA 1:5000-20000**

### Storage

**Storage\***

-15°C to -25°C/1 year (Do not lower than -25°C)

**Formulation**

Liquid in PBS containing 50% glycerol, and 0.02% sodium azide.

### Basic Information

**Clonality**

Polyclonal

### Immunogen Information

**Immunogen**

Synthesized peptide derived from part region of human protein

**Specificity**

VATA Polyclonal Antibody detects endogenous levels of protein.

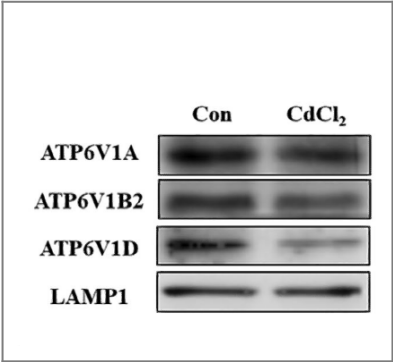
### Target Information

**Gene name**

ATP6V1A ATP6A1 ATP6V1A1 VPP2

<b>Protein Name</b>	V-type proton ATPase catalytic subunit A (V-ATPase subunit A) (V-ATPase 69 kDa subunit) (Vacuolar ATPase isoform VA68) (Vacuolar proton pump subunit alpha)		
	<b>Organism</b>	<b>Gene ID</b>	<b>UniProt ID</b>
	Human	<a href="#">523</a> ;	<a href="#">P38606</a> ;
	Mouse		<a href="#">P50516</a> ;
<b>Cellular Localization</b>	Cytoplasm . Cytoplasm, cytosol . Cytoplasmic vesicle, secretory vesicle . Cytoplasmic vesicle, clathrin-coated vesicle membrane ; Peripheral membrane protein . Lysosome . Co-localizes with WFS1 in the secretory granules in neuroblastoma cell lines. .		
<b>Tissue specificity</b>	High expression in the skin.		
<b>Function</b>	Catalytic activity:ATP + H(2)O + H(+)(In) = ADP + phosphate + H(+)(Out).,Function:Catalytic subunit of the peripheral V1 complex of vacuolar ATPase. V-ATPase vacuolar ATPase is responsible for acidifying a variety of intracellular compartments in eukaryotic cells.,similarity:Belongs to the ATPase alpha/beta chains family.,subunit:V-ATPase is an heteromultimeric enzyme composed of a peripheral catalytic V1 complex (main components: subunits A, B, C, D, E, and F) attached to an integral membrane V0 proton pore complex (main component: the proteolipid protein).,tissue specificity:Present in all tissues analyzed.,		

Validation Data



Autophagy flux inhibition mediated by lysosomal dysfunction participates in the cadmium exposure-induced cardiotoxicity in swine 2022 Mar 14. WB Swine 1:1000 myocardium

Contact information

Orders: order@immunoway.com  
Support: tech@immunoway.com  
Telephone: 877-594-3616 (Toll Free), 408-747-0185  
Website: http://www.immunoway.com  
Address: 2200 Ringwood Ave San Jose, CA 95131 USA



Please scan the QR code to access additional product information:  
**VATA Rabbit pAb**

