

UB2R2 Rabbit pAb

CatalogNo: YN1497

Key Features

Host Species

- Rabbit

Reactivity

- Human, Mouse

Applications

- WB, ELISA

MW

- 26kD (Observed)

Isotype

- IgG

Recommended Dilution Ratios

WB 1:500-2000

ELISA 1:5000-20000

Storage

Storage* -15°C to -25°C/1 year (Do not lower than -25°C)

Formulation Liquid in PBS containing 50% glycerol, 0.5% BSA and 0.02% sodium azide.

Basic Information

Clonality Polyclonal

Immunogen Information

Immunogen Synthesized peptide derived from part region of human protein

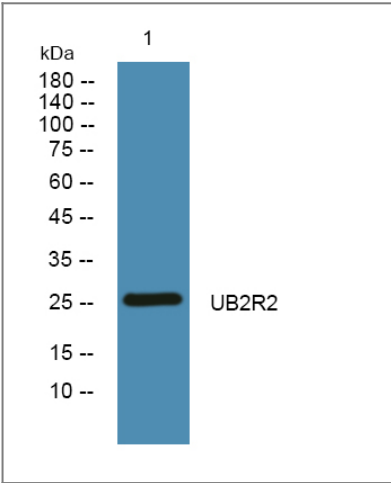
Specificity UB2R2 Polyclonal Antibody detects endogenous levels of protein.

Target Information

Gene name UBE2R2 CDC34B UBC3B

Protein Name	Ubiquitin-conjugating enzyme E2 R2 (Ubiquitin carrier protein R2) (Ubiquitin-conjugating enzyme E2-CDC34B) (Ubiquitin-protein ligase R2)		
	Organism	Gene ID	UniProt ID
	Human	54926 ;	Q712K3 ;
	Mouse		Q6ZWZ2 ;
Cellular Localization	cytoplasm,		
Tissue specificity	Carcinoma,Ovary,Testis,		
Function	Catalytic activity:ATP + ubiquitin + protein lysine = AMP + diphosphate + protein N-ubiquityllysine.,Function:Catalyzes the covalent attachment of ubiquitin to other proteins. May be involved in degradation of katenin.,pathway:Protein modification; protein ubiquitination.,similarity:Belongs to the ubiquitin-conjugating enzyme family.,subunit:When phosphorylated, interacts with beta-TrCP (BTRC).,		

| Validation Data



Western blot analysis of lysates from SW480 cells, primary antibody was diluted at 1:1000, 4°over night

| Contact information

Orders: order@immunoway.com
Support: tech@immunoway.com
Telephone: 877-594-3616 (Toll Free), 408-747-0185
Website: http://www.immunoway.com
Address: 2200 Ringwood Ave San Jose, CA 95131 USA



Please scan the QR code to access additional product information:
UB2R2 Rabbit pAb

