

UB2Q2 Rabbit pAb

CatalogNo: YN1496

Key Features

Host Species

- Rabbit

Reactivity

- Human, Mouse

Applications

- WB, ELISA

MW

- 41kD (Observed)

Isotype

- IgG

Recommended Dilution Ratios

WB 1:500-2000

ELISA 1:5000-20000

Storage

Storage* -15°C to -25°C/1 year (Do not lower than -25°C)

Formulation Liquid in PBS containing 50% glycerol, 0.5% BSA and 0.02% sodium azide.

Basic Information

Clonality Polyclonal

Immunogen Information

Immunogen Synthesized peptide derived from part region of human protein

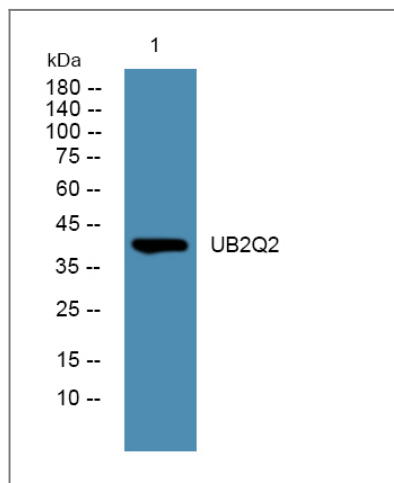
Specificity UB2Q2 Polyclonal Antibody detects endogenous levels of protein.

Target Information

Gene name UBE2Q2

Protein Name	Ubiquitin-conjugating enzyme E2 Q2 (Ubiquitin carrier protein Q2) (Ubiquitin-protein ligase Q2)		
	Organism	Gene ID	UniProt ID
	Human	92912;	Q8WVN8;
	Mouse		Q8K2Z8;
Cellular Localization	Cytoplasm .		
Tissue specificity	Detected in hypopharyngeal head and neck squamous cell carcinoma, in tumor masses and invasive epithelium.		
Function	Catalytic activity:ATP + ubiquitin + protein lysine = AMP + diphosphate + protein N-ubiquityllysine.,Function:Catalyzes the covalent attachment of ubiquitin to other proteins.,pathway:Protein modification; protein ubiquitination.,similarity:Belongs to the ubiquitin-conjugating enzyme family.,tissue specificity:Detected in hypopharyngeal head and neck squamous cell carcinoma, in tumor masses and invasive epithelium.,		

Validation Data



Western blot analysis of lysates from U2OS cells, primary antibody was diluted at 1:1000, 4° over night

Contact information

Orders: order@immunoway.com
 Support: tech@immunoway.com
 Telephone: 877-594-3616 (Toll Free), 408-747-0185
 Website: <http://www.immunoway.com>
 Address: 2200 Ringwood Ave San Jose, CA 95131 USA



Please scan the QR code
 to access additional
 product information:
UB2Q2 Rabbit pAb

