

UB2E3 Rabbit pAb

CatalogNo: YN1490

Key Features

Host Species

- Rabbit

Reactivity

- Human, Mouse

Applications

- WB, ELISA

MW

- 22kD (Observed)

Isotype

- IgG

Recommended Dilution Ratios

WB 1:500-2000

ELISA 1:5000-20000

Storage

Storage* -15°C to -25°C/1 year (Do not lower than -25°C)

Formulation Liquid in PBS containing 50% glycerol, 0.5% BSA and 0.02% sodium azide.

Basic Information

Clonality Polyclonal

Immunogen Information

Immunogen Synthesized peptide derived from part region of human protein

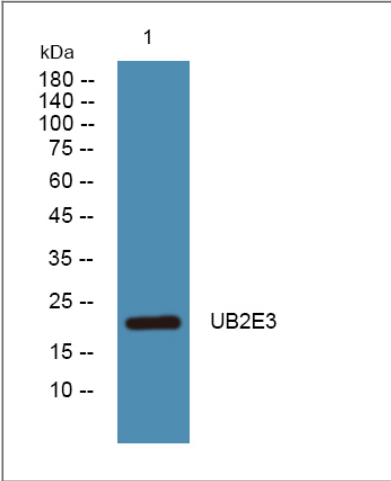
Specificity UB2E3 Polyclonal Antibody detects endogenous levels of protein.

Target Information

Gene name UBE2E3 UBCE4 UBCH9

Protein Name	Ubiquitin-conjugating enzyme E2 E3 (UbcH9) (Ubiquitin carrier protein E3) (Ubiquitin-conjugating enzyme E2-23 kDa) (Ubiquitin-protein ligase E3)		
	Organism	Gene ID	UniProt ID
	Human	10477;	Q969T4;
	Mouse		P52483;
Cellular Localization	Nucleus . Cytoplasm . Shuttles between the nucleus and cytoplasm in a IPO11-dependent manner.		
Tissue specificity	Ubiquitously expressed at low levels. Highly expressed in skeletal muscle.		
Function	Catalytic activity:ATP + ubiquitin + protein lysine = AMP + diphosphate + protein N-ubiquityllysine.,Function:Catalyzes the covalent attachment of ubiquitin to other proteins. Participates in the regulation of transepithelial sodium transport in renal cells. May be involved in cell growth arrest.,pathway:Protein modification; protein ubiquitination.,similarity:Belongs to the ubiquitin-conjugating enzyme family.,subcellular location:Shuttles between the nucleus and cytoplasm in a IPO11-dependent manner.,subunit:The ubiquitin-loaded form interacts specifically with importin-11 (IPO11), leading to its import into the nucleus (By similarity). Interacts with NEDD4L.,tissue specificity:Ubiquitously expressed at low levels. Highly expressed in skeletal muscle.,		

Validation Data



Western blot analysis of lysates from SW480 cells, primary antibody was diluted at 1:1000, 4°over night

Contact information

Orders: order@immunoway.com
Support: tech@immunoway.com
Telephone: 877-594-3616 (Toll Free), 408-747-0185
Website: http://www.immunoway.com
Address: 2200 Ringwood Ave San Jose, CA 95131 USA



Please scan the QR code to access additional product information:
UB2E3 Rabbit pAb

