

UB2L6 Rabbit pAb

CatalogNo: YN1482

| Key Features

Host Species

- Rabbit

Reactivity

- Human,Rat,Mouse

Applications

- WB,ELISA

MW

- 16kD (Observed)

Isotype

- IgG

| Recommended Dilution Ratios

WB 1:500-2000

ELISA 1:5000-20000

| Storage

Storage* -15°C to -25°C/1 year(Do not lower than -25°C)

Formulation Liquid in PBS containing 50% glycerol,0.5% BSA and 0.02% sodium azide.

| Basic Information

Clonality Polyclonal

| Immunogen Information

Immunogen Synthesized peptide derived from part region of human protein

Specificity UB2L6 Polyclonal Antibody detects endogenous levels of protein.

| Target Information

Gene name UBE2L6 UBCH8

Protein Name Ubiquitin/ISG15-conjugating enzyme E2 L6 (Retinoic acid-induced gene B protein) (RIG-B) (UbcH8) (Ubiquitin carrier protein L6) (Ubiquitin-protein ligase L6)

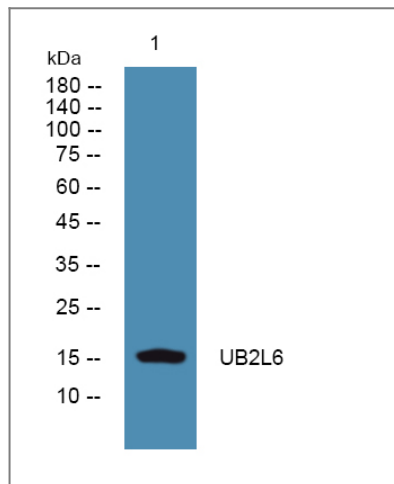
Organism	Gene ID	UniProt ID
Human	9246;	O14933;
Mouse		Q9QZU9;
Rat		Q4V8J2;

Cellular Localization nucleoplasm,cytosol,

Tissue specificity Present in natural killer cells (at protein level).

Function Catalytic activity:ATP + ubiquitin + protein lysine = AMP + diphosphate + protein N-ubiquityllysine.,Function:Catalyzes the covalent attachment of ubiquitin or ISG15 to other proteins. Functions in the E6/E6-AP-induced ubiquitination of p53/TP53.,induction:By interferon beta.,pathway:Protein modification; protein ubiquitination.,similarity:Belongs to the ubiquitin-conjugating enzyme family.,subunit:Interacts with RNF19A, RNF19B and RNF144B.,tissue specificity:Present in natural killer cells (at protein level).,

Validation Data



Western blot analysis of lysates from Jurkat cells, primary antibody was diluted at 1:1000, 4° over night

Contact information

Orders: order@immunoway.com
Support: tech@immunoway.com
Telephone: 877-594-3616 (Toll Free), 408-747-0185
Website: <http://www.immunoway.com>
Address: 2200 Ringwood Ave San Jose, CA 95131 USA



Please scan the QR code to access additional product information:
UB2L6 Rabbit pAb

