

PURA Rabbit pAb

CatalogNo: YN1438

Key Features

Host Species

- Rabbit

Reactivity

- Human,Rat,Mouse

Applications

- WB,ELISA

MW

- 35kD (Observed)

Isotype

- IgG

Recommended Dilution Ratios

WB 1:500-2000**ELISA 1:5000-20000**

Storage

Storage* -15°C to -25°C/1 year(Do not lower than -25°C)**Formulation** Liquid in PBS containing 50% glycerol,0.5% BSA and 0.02% sodium azide.

Basic Information

Clonality Polyclonal

Immunogen Information

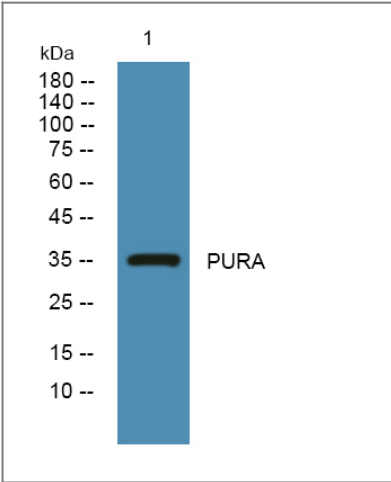
Immunogen Synthesized peptide derived from part region of human protein**Specificity** PURA Polyclonal Antibody detects endogenous levels of protein.

Target Information

Gene name PURA PUR1

Protein Name	Transcriptional activator protein Pur-alpha (Purine-rich single-stranded DNA-binding protein alpha)		
	Organism	Gene ID	UniProt ID
	Human	5813;	Q00577;
	Mouse		P42669;
	Rat		P86252;
Cellular Localization	Nucleus.		
Tissue specificity	Brain,Epithelium,Fetal liver,PCR rescued clones,		
Function	Function:This is a probable transcription activator that specifically binds the purine-rich single strand of the PUR element located upstream of the MYC gene. May play a role in the initiation of DNA replication and in recombination.,similarity:Belongs to the PUR DNA-binding protein family.,subunit:Homodimer, heterodimer with PURB and heterotrimer with PURB and YBX1/Y-box protein 1.,		

Validation Data



Western blot analysis of lysates from K562 cells, primary antibody was diluted at 1:1000, 4°over night

Contact information

Orders: order@immunoway.com
 Support: tech@immunoway.com
 Telephone: 877-594-3616 (Toll Free), 408-747-0185
 Website: <http://www.immunoway.com>
 Address: 2200 Ringwood Ave San Jose, CA 95131 USA



Please scan the QR code
 to access additional
 product information:
PURA Rabbit pAb

