

TM2D1 Rabbit pAb

CatalogNo: YN1413

| Key Features

Host Species

- Rabbit

Reactivity

- Human, Mouse

Applications

- WB, ELISA

MW

- 22kD (Observed)

Isotype

- IgG

| Recommended Dilution Ratios

WB 1:500-2000

ELISA 1:5000-20000

| Storage

Storage* -15°C to -25°C/1 year (Do not lower than -25°C)

Formulation Liquid in PBS containing 50% glycerol, 0.5% BSA and 0.02% sodium azide.

| Basic Information

Clonality Polyclonal

| Immunogen Information

Immunogen Synthesized peptide derived from part region of human protein

Specificity TM2D1 Polyclonal Antibody detects endogenous levels of protein.

| Target Information

Gene name TM2D1 BBP

Protein Name TM2 domain-containing protein 1 (Beta-amyloid-binding protein) (hBBP)

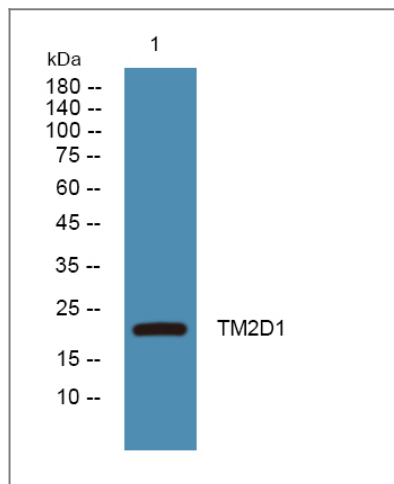
Organism	Gene ID	UniProt ID
Human	83941 ;	Q9BX74 ;
Mouse		Q99MB3 ;

Cellular Localization Membrane ; Multi-pass membrane protein .

Tissue specificity Widely expressed.

Function Caution:Was initially thought (PubMed:11278849) to modulate beta-amyloid toxicity by coupling to G protein. However, PubMed:12836168 showed that this effect is not direct.,Function:May participate to beta-amyloid-induced apoptosis via its interaction with beta-APP42.,PTM:N-glycosylated.,similarity:Belongs to the TM2 family.,subunit:Interacts with beta-APP42 (beta-amyloid protein 42) peptide of APP.,tissue specificity:Widely expressed.,

Validation Data



Western blot analysis of lysates from SW480 cells, primary antibody was diluted at 1:1000, 4° over night

Contact information

Orders: order@immunoway.com
Support: tech@immunoway.com
Telephone: 877-594-3616 (Toll Free), 408-747-0185
Website: <http://www.immunoway.com>
Address: 2200 Ringwood Ave San Jose, CA 95131 USA



Please scan the QR code to access additional product information:
TM2D1 Rabbit pAb

