

## THBG Rabbit pAb

CatalogNo: YN1407

### | Key Features

#### Host Species

- Rabbit

#### Reactivity

- Human,Rat,Mouse

#### Applications

- WB,ELISA

#### MW

- 45kD (Observed)

#### Isotype

- IgG

### | Recommended Dilution Ratios

**WB 1:500-2000**

**ELISA 1:5000-20000**

### | Storage

**Storage\*** -15°C to -25°C/1 year(Do not lower than -25°C)

**Formulation** Liquid in PBS containing 50% glycerol, and 0.02% sodium azide.

### | Basic Information

**Clonality** Polyclonal

### | Immunogen Information

**Immunogen** Synthesized peptide derived from part region of human protein

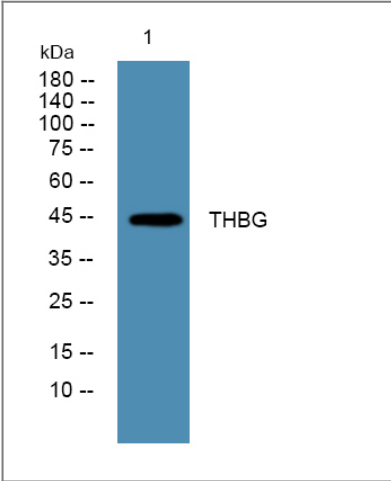
**Specificity** THBG Polyclonal Antibody detects endogenous levels of protein.

### | Target Information

**Gene name** SERPINA7 TBG

<b>Protein Name</b>	Thyroxine-binding globulin (Serpina A7) (T4-binding globulin)		
	<b>Organism</b>	<b>Gene ID</b>	<b>UniProt ID</b>
	Human	<a href="#">6906;</a>	<a href="#">P05543;</a>
	Mouse		<a href="#">P61939;</a>
	Rat		<a href="#">P35577;</a>
<b>Cellular Localization</b>	Secreted.		
<b>Tissue specificity</b>	Expressed by the liver and secreted in plasma.		
<b>Function</b>	<p>Disease:Defects in SERPINA7 are a cause of TBG deficiency [MIM:314200]. Mutations in the SERPINA7 gene can result as a whole spectrum of deficiencies, characterized by either reduced or increased TBG levels in the serum. Patients show, respectively, reduced or elevated protein-bound iodine but are euthyroid.,Function:Major thyroid hormone transport protein in serum.,polymorphism:Two qualitative TBG variants occur in particular populations. TBG-A is found in 40% of Australian aborigines, it has reduced affinity for thyroxine and triiodothyroxine and increased susceptibility to inactivation by heat or acid. TBG-S ('s' for slow shift on isoelectric focusing) is found in blacks, Eskimos, Melanesians, Polynesians and Indonesians, but not in Caucasians; TBG-S is slightly more thermolabile.,similarity:Belongs to the serpin family.,tissue specificity:Expressed by the liver and secreted in plasma.,</p>		

Validation Data



Western blot analysis of lysates from PC12 cells, primary antibody was diluted at 1:1000, 4°over night

Contact information

Orders: order@immunoway.com  
Support: tech@immunoway.com  
Telephone: 877-594-3616 (Toll Free), 408-747-0185  
Website: http://www.immunoway.com  
Address: 2200 Ringwood Ave San Jose, CA 95131 USA



Please scan the QR code  
to access additional  
product information:  
**THBG Rabbit pAb**

---

For Research Use Only. Not for Use in Diagnostic Procedures.

[Antibody](#) | [ELISA Kits](#) | [Protein](#) | [Reagents](#)