

Z280B Rabbit pAb

CatalogNo: YN1376

Key Features

Host Species

- Rabbit

Reactivity

- Human

Applications

- WB,ELISA

MW

- 59kD (Observed)

Isotype

- IgG

Recommended Dilution Ratios

WB 1:500-2000

ELISA 1:5000-20000

Storage

Storage* -15°C to -25°C/1 year(Do not lower than -25°C)

Formulation Liquid in PBS containing 50% glycerol,0.5% BSA and 0.02% sodium azide.

Basic Information

Clonality Polyclonal

Immunogen Information

Immunogen Synthesized peptide derived from part region of human protein

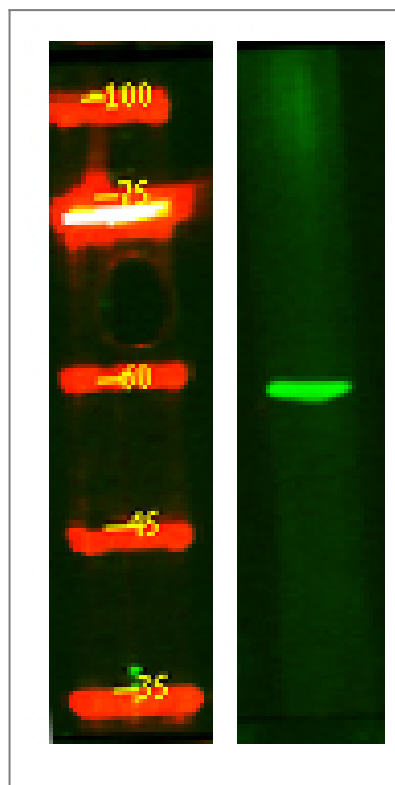
Specificity Z280B Polyclonal Antibody detects endogenous levels of protein.

Target Information

Gene name ZNF280B SUHW2 ZNF279 ZNF632

Protein Name	Zinc finger protein 280B (5'OY11.1) (Suppressor of hairy wing homolog 2) (Zinc finger protein 279) (Zinc finger protein 632)		
	Organism	Gene ID	UniProt ID
	Human	140883 ;	Q86YH2 ;
Cellular Localization	Nucleus .		
Tissue specificity	Testis,Uterus,		
Function	Function:May function as a transcription factor.,PTM:Phosphorylated upon DNA damage, probably by ATM or ATR.,similarity:Contains 4 C2H2-type zinc fingers.,		

Validation Data



Western Blot analysis of HEK293 lysis, using primary antibody at 1:1000 dilution. Secondary antibody(catalog#:RS23920) was diluted at 1:10000

Contact information

Orders: order@immunoway.com
 Support: tech@immunoway.com
 Telephone: 877-594-3616 (Toll Free), 408-747-0185
 Website: <http://www.immunoway.com>
 Address: 2200 Ringwood Ave San Jose, CA 95131 USA



Please scan the QR code to access additional product information:
Z280B Rabbit pAb

