

## STAR Rabbit pAb

CatalogNo: YN1369

### Key Features

**Host Species**

- Rabbit

**Reactivity**

- Human,Rat,Mouse

**Applications**

- WB,ELISA

**MW**

- 31kD (Observed)

**Isotype**

- IgG

### Recommended Dilution Ratios

**WB 1:500-2000****ELISA 1:5000-20000**

### Storage

**Storage\*** -15°C to -25°C/1 year(Do not lower than -25°C)**Formulation** Liquid in PBS containing 50% glycerol, and 0.02% sodium azide.

### Basic Information

**Clonality** Polyclonal

### Immunogen Information

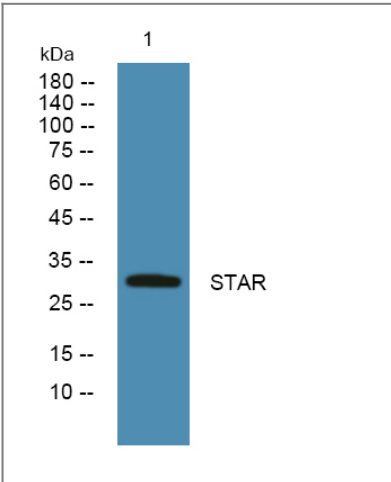
**Immunogen** Synthesized peptide derived from part region of human protein**Specificity** STAR Polyclonal Antibody detects endogenous levels of protein.

### Target Information

**Gene name** STAR STARD1

<b>Protein Name</b>	Steroidogenic acute regulatory protein, mitochondrial (StAR) (START domain-containing protein 1) (StARD1)		
	<b>Organism</b>	<b>Gene ID</b>	<b>UniProt ID</b>
	Human	<a href="#">6770;</a>	<a href="#">P49675;</a>
	Mouse		<a href="#">P51557;</a>
	Rat		<a href="#">P97826;</a>
<b>Cellular Localization</b>	Mitochondrion .		
<b>Tissue specificity</b>	Expressed in gonads, adrenal cortex and kidney.		
<b>Function</b>	<p>Disease:Defects in STAR are a cause of congenital lipoid adrenal hyperplasia (CLAH) [MIM:201710]; also called lipoid CAH. CLAH is the most severe form of adrenal hyperplasia. This autosomal recessive and potentially lethal condition includes the onset of profound adrenocortical insufficiency shortly after birth, hyperpigmentation reflecting increased production of pro-opiomelanocortin, elevated plasma renin activity as a consequence of reduced aldosterone synthesis, and male pseudohermaphroditism resulting from deficient fetal testicular testosterone synthesis. CLAH is a rare disease, except in Japan and Korea where it accounts for a significant percentage of cases of congenital adrenal hyperplasia.,Function:Plays a key role in steroid hormone synthesis by enhancing the metabolism of cholesterol into pregnenolone. Mediates the transfer of cholesterol from the outer mitochondrial membrane to the inner mitochondrial membrane where it is cleaved to pregnenolone.,online information:Steroidogenic acute regulatory protein entry,pathway:Steroid metabolism; cholesterol metabolism.,similarity:Contains 1 START domain.,subunit:May interact with TSPO.,tissue specificity:Expressed in gonads, adrenal cortex and kidney.,</p>		

| Validation Data



Western blot analysis of lysates from SH-SY5Y cells, primary antibody was diluted at 1:1000, 4°over night

| Contact information

Orders: [order@immunoway.com](mailto:order@immunoway.com)  
Support: [tech@immunoway.com](mailto:tech@immunoway.com)  
Telephone: 877-594-3616 (Toll Free), 408-747-0185  
Website: <http://www.immunoway.com>  
Address: 2200 Ringwood Ave San Jose, CA 95131 USA



Please scan the QR code  
to access additional  
product information:  
**STAR Rabbit pAb**

---

For Research Use Only. Not for Use in Diagnostic Procedures.

[Antibody](#) | [ELISA Kits](#) | [Protein](#) | [Reagents](#)