

CLASR Rabbit pAb

CatalogNo: YN1364

Key Features

Host Species

- Rabbit

Reactivity

- Human, Mouse, Rat

Applications

- WB, ELISA

MW

- 74kD (Observed)

Isotype

- IgG

Recommended Dilution Ratios

WB 1:500-2000

ELISA 1:5000-20000

Storage

Storage* -15°C to -25°C/1 year (Do not lower than -25°C)

Formulation Liquid in PBS containing 50% glycerol, 0.5% BSA and 0.02% sodium azide.

Basic Information

Clonality Polyclonal

Immunogen Information

Immunogen Synthesized peptide derived from part region of human protein

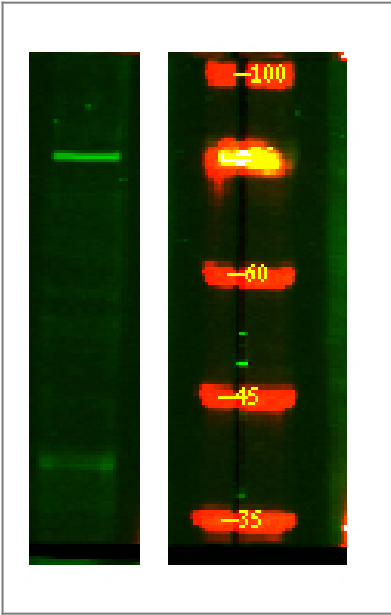
Specificity CLASR Polyclonal Antibody detects endogenous levels of protein.

Target Information

Gene name CLASRP SFRS16 SWAP2 UNQ2428/PRO4988

Protein Name	CLK4-associating serine/arginine rich protein (Splicing factor, arginine/serine-rich 16) (Suppressor of white-apricot homolog 2)		
	Organism	Gene ID	UniProt ID
	Human	11129;	Q8N2M8;
	Mouse		Q8CFC7;
	Rat		Q5HZB6;
Cellular Localization	Nucleus .		
Tissue specificity	Epithelium,Skin,		
Function	Caution:It is uncertain whether Met-1 or Met-16 is the initiator.,Function:Probably functions as an alternative splicing regulator. May regulate the mRNA splicing of genes such as CLK1. May act by regulating members of the CLK kinase family.,PTM:Phosphorylated in vitro by CLK4.,similarity:Belongs to the splicing factor SR family.,subunit:Probably interacts with CLK4.,		

| Validation Data



Western Blot analysis of HEK293 lysis, using primary antibody at 1:1000 dilution. Secondary antibody(catalog#:RS23920) was diluted at 1:10000

| Contact information

Orders: order@immunoway.com
Support: tech@immunoway.com
Telephone: 877-594-3616 (Toll Free), 408-747-0185
Website: http://www.immunoway.com
Address: 2200 Ringwood Ave San Jose, CA 95131 USA



Please scan the QR code
to access additional
product information:
CLASR Rabbit pAb

For Research Use Only. Not for Use in Diagnostic Procedures.

[Antibody](#) | [ELISA Kits](#) | [Protein](#) | [Reagents](#)