

## SL9C1 Rabbit pAb

CatalogNo: YN1337

### Key Features

#### Host Species

- Rabbit

#### Reactivity

- Human, Mouse

#### Applications

- WB, ELISA

#### MW

- 129kD (Observed)

#### Isotype

- IgG

### Recommended Dilution Ratios

WB 1:500-2000

ELISA 1:5000-20000

### Storage

**Storage\*** -15°C to -25°C/1 year (Do not lower than -25°C)

**Formulation** Liquid in PBS containing 50% glycerol, 0.5% BSA and 0.02% sodium azide.

### Basic Information

**Clonality** Polyclonal

### Immunogen Information

**Immunogen** Synthesized peptide derived from part region of human protein

**Specificity** SL9C1 Polyclonal Antibody detects endogenous levels of protein.

### Target Information

**Gene name** SLC9C1 SLC9A10

**Protein Name** Sodium/hydrogen exchanger 10 (Na(+)/H(+) exchanger 10) (NHE-10) (Solute carrier family 9 member 10) (Solute carrier family 9 member C1) (Sperm-specific Na(+)/H(+) exchanger) (sNHE)

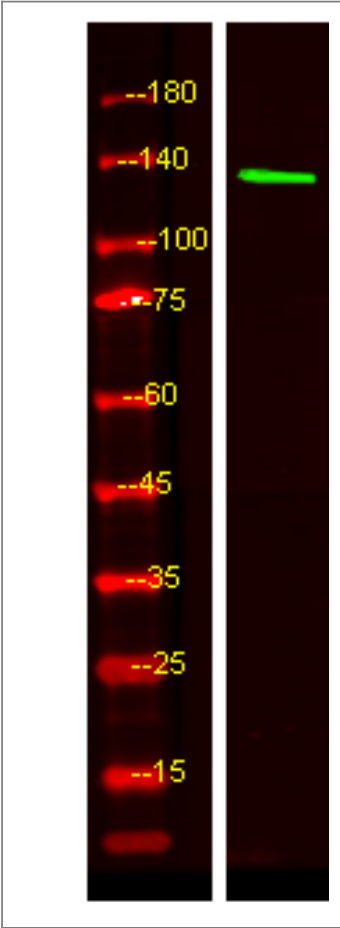
Organism	Gene ID	UniProt ID
Human	<a href="#">285335</a> ;	<a href="#">Q4G0N8</a> ;
Mouse		<a href="#">Q6UJY2</a> ;

**Cellular Localization** Cell projection, cilium, flagellum membrane ; Multi-pass membrane protein .

**Tissue specificity** Testis,

**Function** Domain:The ion transport-like region is related to the membrane segments of voltage-gated ion channels. Its function is unknown.,Function:Sperm-specific sodium/hydrogen exchanger involved in intracellular pH regulation of spermatozoa. Required for sperm motility and fertility. Involved in sperm cell hyperactivation, a step needed for sperm motility which is essential late in the preparation of sperm for fertilization. Required for the expression and bicarbonate regulation of the soluble adenylyl cyclase (sAC).,similarity:Belongs to the monovalent cation:proton antiporter 1 (CPA1) transporter (TC 2.A.36) family.,similarity:Contains 1 cyclic nucleotide-binding domain.,subunit:Interacts with soluble adenylyl cyclase (sAC).,

Validation Data



Western Blot analysis of HEK293 lysis, using primary antibody at 1:1000 dilution. Secondary antibody(catalog#:RS23920) was diluted at 1:10000

## | Contact information

Orders: order@immunoway.com  
Support: tech@immunoway.com  
Telephone: 877-594-3616 (Toll Free), 408-747-0185  
Website: <http://www.immunoway.com>  
Address: 2200 Ringwood Ave San Jose, CA 95131 USA



Please scan the QR code  
to access additional  
product information:  
**SL9C1 Rabbit pAb**

---

For Research Use Only. Not for Use in Diagnostic Procedures.

[Antibody](#) | [ELISA Kits](#) | [Protein](#) | [Reagents](#)