

SCNM1 Rabbit pAb

CatalogNo: YN1329

Key Features

Host Species

- Rabbit

Reactivity

- Human, Mouse

Applications

- WB, ELISA

MW

- 25kD (Observed)

Isotype

- IgG

Recommended Dilution Ratios

WB 1:500-2000

ELISA 1:5000-20000

Storage

Storage* -15°C to -25°C/1 year (Do not lower than -25°C)

Formulation Liquid in PBS containing 50% glycerol, 0.5% BSA and 0.02% sodium azide.

Basic Information

Clonality Polyclonal

Immunogen Information

Immunogen Synthesized peptide derived from part region of human protein

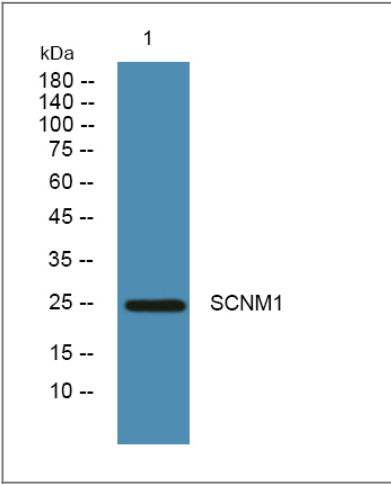
Specificity SCNM1 Polyclonal Antibody detects endogenous levels of protein.

Target Information

Gene name SCNM1

| | | | |
|------------------------------|---|----------------------------|-------------------------|
| Protein Name | Sodium channel modifier 1 | | |
| | Organism | Gene ID | UniProt ID |
| | Human | 100534012; | Q9BWG6; |
| | Mouse | | Q8K136; |
| Cellular Localization | Nucleus, nucleoplasm . Nucleus speckle . Colocalizes with LUC7L2 and SNRNP70 in nuclear speckles. . | | |
| Tissue specificity | Eye, | | |
| Function | Function:May function as a RNA splicing factor.,similarity:Contains 1 matrin-type zinc finger., | | |

Validation Data



Western blot analysis of lysates from KB cells, primary antibody was diluted at 1:1000, 4°over night

Contact information

Orders: order@immunoway.com
 Support: tech@immunoway.com
 Telephone: 877-594-3616 (Toll Free), 408-747-0185
 Website: <http://www.immunoway.com>
 Address: 2200 Ringwood Ave San Jose, CA 95131 USA



Please scan the QR code
 to access additional
 product information:
SCN1 Rabbit pAb