

## SASH3 Rabbit pAb

CatalogNo: YN1308

### Key Features

#### Host Species

- Rabbit

#### Reactivity

- Human, Mouse

#### Applications

- WB, ELISA

#### MW

- 41kD (Observed)

#### Isotype

- IgG

### Recommended Dilution Ratios

WB 1:500-2000

ELISA 1:5000-20000

### Storage

**Storage\*** -15°C to -25°C/1 year (Do not lower than -25°C)

**Formulation** Liquid in PBS containing 50% glycerol, 0.5% BSA and 0.02% sodium azide.

### Basic Information

**Clonality** Polyclonal

### Immunogen Information

**Immunogen** Synthesized peptide derived from part region of human protein

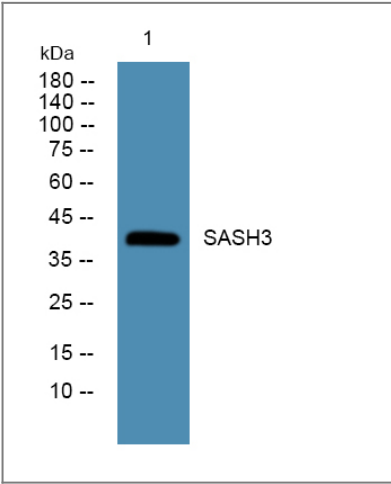
**Specificity** SASH3 Polyclonal Antibody detects endogenous levels of protein.

### Target Information

**Gene name** SASH3 CXorf9 SLY

<b>Protein Name</b>	SAM and SH3 domain-containing protein 3 (SH3 protein expressed in lymphocytes homolog)		
	<b>Organism</b>	<b>Gene ID</b>	<b>UniProt ID</b>
	Human	<a href="#">54440;</a>	<a href="#">O75995;</a>
	Mouse		<a href="#">Q8K352;</a>
<b>Cellular Localization</b>	nucleus,cytoplasm,		
<b>Tissue specificity</b>	Spleen,Testis,		
<b>Function</b>	Function:May function as a signaling adapter protein in lymphocytes.,similarity:Contains 1 SAM (sterile alpha motif) domain.,similarity:Contains 1 SH3 domain.,		

## Validation Data



Western blot analysis of lysates from DU145 cells, primary antibody was diluted at 1:1000, 4°over night

## Contact information

Orders: [order@immunoway.com](mailto:order@immunoway.com)  
 Support: [tech@immunoway.com](mailto:tech@immunoway.com)  
 Telephone: 877-594-3616 (Toll Free), 408-747-0185  
 Website: <http://www.immunoway.com>  
 Address: 2200 Ringwood Ave San Jose, CA 95131 USA



Please scan the QR code to access additional product information:  
**SASH3 Rabbit pAb**