

STAC3 Rabbit pAb

CatalogNo: YN1299

Key Features

Host Species

- Rabbit

Reactivity

- Human, Mouse

Applications

- WB, ELISA

MW

- 40kD (Observed)

Isotype

- IgG

Recommended Dilution Ratios

WB 1:500-2000

ELISA 1:5000-20000

Storage

Storage* -15°C to -25°C/1 year (Do not lower than -25°C)

Formulation Liquid in PBS containing 50% glycerol, and 0.02% sodium azide.

Basic Information

Clonality Polyclonal

Immunogen Information

Immunogen Synthesized peptide derived from part region of human protein

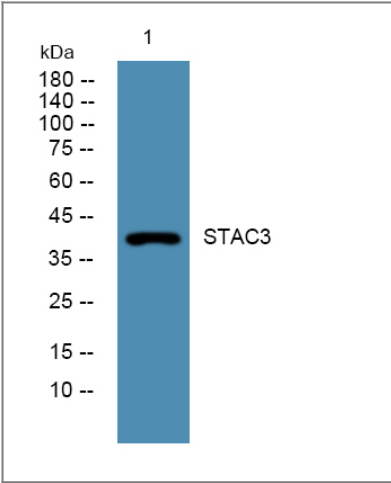
Specificity STAC3 Polyclonal Antibody detects endogenous levels of protein.

Target Information

Gene name STAC3

Protein Name	SH3 and cysteine-rich domain-containing protein 3		
	Organism	Gene ID	UniProt ID
	Human	246329 ;	Q96MF2 ;
	Mouse		Q8BZ71 ;
Cellular Localization	Cytoplasm . Cell membrane, sarcolemma ; Peripheral membrane protein ; Cytoplasmic side . Cell membrane, sarcolemma, T-tubule . Co-localizes with CACNA1S and CACNA1C on T-tubules. .		
Tissue specificity	Muscle,Skeletal muscle,		
Function	similarity:Contains 1 phorbol-ester/DAG-type zinc finger.,similarity:Contains 2 SH3 domains.,		

Validation Data



Western blot analysis of lysates from Jurkat cells, primary antibody was diluted at 1:1000, 4°over night

Contact information

Orders: order@immunoway.com
 Support: tech@immunoway.com
 Telephone: 877-594-3616 (Toll Free), 408-747-0185
 Website: <http://www.immunoway.com>
 Address: 2200 Ringwood Ave San Jose, CA 95131 USA



Please scan the QR code
 to access additional
 product information:
STAC3 Rabbit pAb