

## SPA9 Rabbit pAb

CatalogNo: YN1287

### | Key Features

#### Host Species

- Rabbit

#### Reactivity

- Human, Mouse

#### Applications

- WB, ELISA

#### MW

- 45kD (Observed)

#### Isotype

- IgG

### | Recommended Dilution Ratios

**WB 1:500-2000**

**ELISA 1:5000-20000**

### | Storage

**Storage\*** -15°C to -25°C/1 year (Do not lower than -25°C)

**Formulation** Liquid in PBS containing 50% glycerol, 0.5% BSA and 0.02% sodium azide.

### | Basic Information

**Clonality** Polyclonal

### | Immunogen Information

**Immunogen** Synthesized peptide derived from part region of human protein

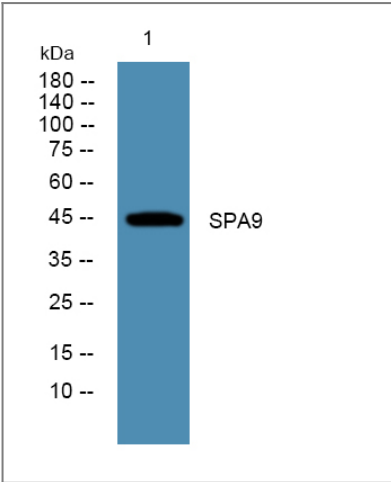
**Specificity** SPA9 Polyclonal Antibody detects endogenous levels of protein.

### | Target Information

**Gene name** SERPINA9 GCET1 SERPINA11 UNQ692/PRO1337

Protein Name	Serpin A9 (Centerin) (Germinal center B-cell-expressed transcript 1 protein)		
	Organism	Gene ID	UniProt ID
	Human	<a href="#">327657</a> ;	<a href="#">Q86WD7</a> ;
	Mouse		<a href="#">Q9D7D2</a> ;
Cellular Localization	[Isoform 1]: Secreted.; [Isoform 2]: Cytoplasm .; [Isoform 3]: Cytoplasm .; [Isoform 4]: Cytoplasm .; [Isoform 5]: Cytoplasm .; [Isoform 6]: Cytoplasm .; [Isoform 7]: Membrane ; Single-pass type II membrane protein .		
Tissue specificity	Highly expressed in normal germinal center (GC) B-cells and GC B-cell-derived malignancies.		
Function	similarity:Belongs to the serpin family.,tissue specificity:Highly expressed in normal germinal center (GC) B-cells and GC B-cell-derived malignancies.,		

Validation Data



Western blot analysis of lysates from K562 cells, primary antibody was diluted at 1:1000, 4°over night

Contact information

Orders: [order@immunoway.com](mailto:order@immunoway.com)  
 Support: [tech@immunoway.com](mailto:tech@immunoway.com)  
 Telephone: 877-594-3616 (Toll Free), 408-747-0185  
 Website: <http://www.immunoway.com>  
 Address: 2200 Ringwood Ave San Jose, CA 95131 USA



Please scan the QR code  
 to access additional  
 product information:  
**SPA9 Rabbit pAb**