

CNEP1 Rabbit pAb

CatalogNo: YN1284

Key Features

Host Species

- Rabbit

Reactivity

- Human,Rat,Mouse

Applications

- WB,ELISA

MW

- 26kD (Observed)

Isotype

- IgG

Recommended Dilution Ratios

WB 1:500-2000

ELISA 1:5000-20000

Storage

Storage* -15°C to -25°C/1 year(Do not lower than -25°C)

Formulation Liquid in PBS containing 50% glycerol,0.5% BSA and 0.02% sodium azide.

Basic Information

Clonality Polyclonal

Immunogen Information

Immunogen Synthesized peptide derived from human protein . at AA range: 100-180

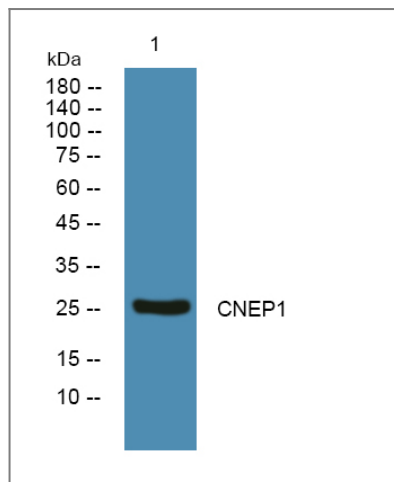
Specificity CNEP1 Polyclonal Antibody detects endogenous levels of protein.

Target Information

Gene name CTDNEP1 DULLARD

| | | | |
|------------------------------|--|------------------------|-------------------------|
| Protein Name | CTD nuclear envelope phosphatase 1 (Serine/threonine-protein phosphatase dullard) | | |
| | Organism | Gene ID | UniProt ID |
| | Human | 23399; | O95476; |
| | Mouse | | Q3TP92; |
| | Rat | | Q3B7T6; |
| Cellular Localization | Endoplasmic reticulum membrane; Single-pass membrane protein. Nucleus membrane; Single-pass membrane protein. | | |
| Tissue specificity | Muscle specific with lower expression in other metabolic tissues. | | |
| Function | Catalytic activity:A phosphoprotein + H(2)O = a protein + phosphate.,Function:Serine/threonine phosphatase which may be required for proper nuclear membrane morphology. Involved in LPIN1 dephosphorylation. May antagonize BMP signaling.,similarity:Belongs to the dullard family.,similarity:Contains 1 FCP1 homology domain., | | |

Validation Data



Western blot analysis of lysates from KB cells, primary antibody was diluted at 1:1000, 4° over night

Contact information

Orders: order@immunoway.com
 Support: tech@immunoway.com
 Telephone: 877-594-3616 (Toll Free), 408-747-0185
 Website: <http://www.immunoway.com>
 Address: 2200 Ringwood Ave San Jose, CA 95131 USA



Please scan the QR code to access additional product information:
CNEP1 Rabbit pAb

