

PRS23 Rabbit pAb

CatalogNo: YN1252

Key Features

Host Species

- Rabbit

Reactivity

- Human,Rat,Mouse

Applications

- WB,ELISA

MW

- 42kD (Observed)

Isotype

- IgG

Recommended Dilution Ratios

WB 1:500-2000

ELISA 1:5000-20000

Storage

Storage* -15°C to -25°C/1 year(Do not lower than -25°C)

Formulation Liquid in PBS containing 50% glycerol,0.5% BSA and 0.02% sodium azide.

Basic Information

Clonality Polyclonal

Immunogen Information

Immunogen Synthesized peptide derived from human protein . at AA range: 150-230

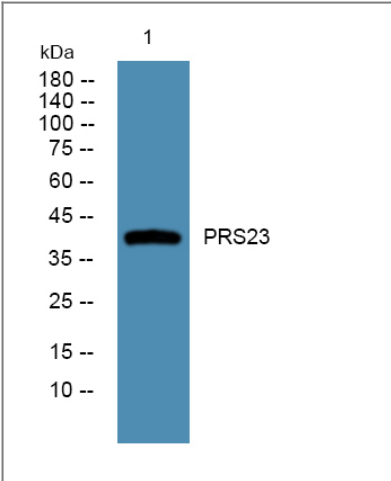
Specificity PRS23 Polyclonal Antibody detects endogenous levels of protein.

Target Information

Gene name PRSS23 ZSIG13 UNQ270/PRO307

Protein Name	Serine protease 23 (Putative secreted protein Zsig13)		
	Organism	Gene ID	UniProt ID
	Human	11098;	O95084;
	Mouse		Q9D6X6;
	Rat		Q6AY61;
Cellular Localization	Secreted .		
Tissue specificity	Cervix,Umbilical vein,Uterus,		
Function	similarity:Belongs to the peptidase S1 family.,		

Validation Data



Western blot analysis of lysates from A431 cells, primary antibody was diluted at 1:1000, 4°over night

Contact information

Orders: order@immunoway.com
 Support: tech@immunoway.com
 Telephone: 877-594-3616 (Toll Free), 408-747-0185
 Website: <http://www.immunoway.com>
 Address: 2200 Ringwood Ave San Jose, CA 95131 USA



Please scan the QR code
 to access additional
 product information:
PRS23 Rabbit pAb