

RHOQ Rabbit pAb

CatalogNo: YN1231

| Key Features

Host Species

- Rabbit

Reactivity

- Human, Mouse, Rat

Applications

- WB, ELISA

MW

- 22kD (Observed)

Isotype

- IgG

| Recommended Dilution Ratios

WB 1:500-2000

ELISA 1:5000-20000

| Storage

Storage* -15°C to -25°C/1 year (Do not lower than -25°C)

Formulation Liquid in PBS containing 50% glycerol, 0.5% BSA and 0.02% sodium azide.

| Basic Information

Clonality Polyclonal

| Immunogen Information

Immunogen Synthesized peptide derived from human protein . at AA range: 60-140

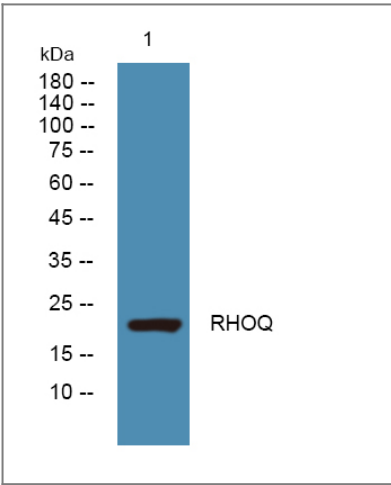
Specificity RHOQ Polyclonal Antibody detects endogenous levels of protein.

| Target Information

Gene name RHOQ ARHQ RASL7A TC10

Protein Name	Rho-related GTP-binding protein RhoQ (Ras-like protein TC10) (Ras-like protein family member 7A)		
	Organism	Gene ID	UniProt ID
	Human	23433 ;	P17081 ;
	Mouse		Q8R527 ;
	Rat		Q9JL4 ;
Cellular Localization	Cytoplasm . Cell membrane ; Lipid-anchor .		
Tissue specificity	Brain,Embryo,Lung,Skin,		
Function	<p>enzyme regulation:Regulated by guanine nucleotide exchange factors (GEFs) which promote the exchange of bound GDP for free GTP, GTPase activating proteins (GAPs) which increase the GTP hydrolysis activity, and GDP dissociation inhibitors which inhibit the dissociation of the nucleotide from the GTPase.,Function:Plasma membrane-associated small GTPase which cycles between an active GTP-bound and an inactive GDP-bound state. In active state binds to a variety of effector proteins to regulate cellular responses. Involved in epithelial cell polarization processes. May play a role in CFTR trafficking to the plasma membrane. Causes the formation of thin, actin-rich surface projections called filopodia.,PTM:May be post-translationally modified by both palmitoylation and polyisoprenylation.,similarity:Belongs to the small GTPase superfamily. Rho family.,subunit:Interacts with CDC42EP4 in a GTP-dependent manner. Interacts with TCGAP/SNX26 (By similarity). Interacts with CDC42EP1, CDC42EP2, CDC42EP3, PARD6A, PARD6G (and probably PARD6B) in a GTP-dependent manner. Part of a quaternary complex containing PARD3, some PARD6 protein (PARD6A, PARD6B or PARD6G) and some atypical PKC protein (PRKCI or PRKCZ). Interacts with EXO70 in a GTP-dependent manner. Interacts with GOPC.,</p>		

Validation Data



Western blot analysis of lysates from HCT116 cells, primary antibody was diluted at 1:1000, 4°over night

Contact information

Orders: order@immunoway.com
Support: tech@immunoway.com
Telephone: 877-594-3616 (Toll Free), 408-747-0185
Website: <http://www.immunoway.com>
Address: 2200 Ringwood Ave San Jose, CA 95131 USA



Please scan the QR code
to access additional
product information:
RHOQ Rabbit pAb

For Research Use Only. Not for Use in Diagnostic Procedures.

[Antibody](#) | [ELISA Kits](#) | [Protein](#) | [Reagents](#)