

RND2 Rabbit pAb

CatalogNo: YN1230

Key Features

Host Species

- Rabbit

Reactivity

- Human, Mouse

Applications

- WB, ELISA

MW

- 24kD (Observed)

Isotype

- IgG

Recommended Dilution Ratios

WB 1:500-2000**ELISA 1:5000-20000**

Storage

Storage* -15°C to -25°C/1 year (Do not lower than -25°C)**Formulation** Liquid in PBS containing 50% glycerol, 0.5% BSA and 0.02% sodium azide.

Basic Information

Clonality Polyclonal

Immunogen Information

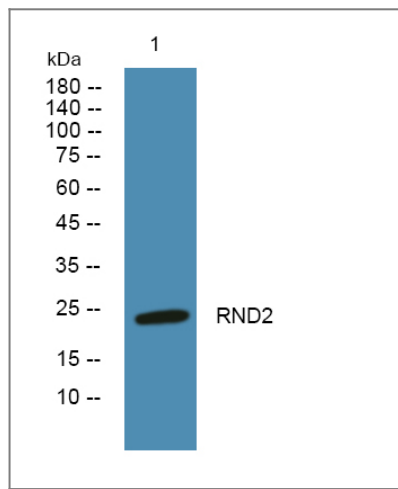
Immunogen Synthesized peptide derived from human protein . at AA range: 140-220**Specificity** RND2 Polyclonal Antibody detects endogenous levels of protein.

Target Information

Gene name RND2 ARHN RHO7

Protein Name	Rho-related GTP-binding protein RhoN (Rho family GTPase 2) (Rho-related GTP-binding protein Rho7) (Rnd2)		
	Organism	Gene ID	UniProt ID
	Human	8153 ;	P52198 ;
	Mouse		Q9QYM5 ;
Cellular Localization	Cytoplasmic vesicle, secretory vesicle, acrosome membrane ; Lipid-anchor ; Cytoplasmic side . Colocalizes with RACGAP1 in Golgi-derived proacrosomal vesicles and the acrosome. .		
Tissue specificity	Highly expressed in testis.		
Function	Function:May be specifically involved in neuronal and hepatic functions. Is a C3 toxin-insensitive member of the Rho subfamily.,similarity:Belongs to the small GTPase superfamily. Rho family.,subcellular location:Colocalizes with RACGAP1 in Golgi-derived proacrosomal vesicles and the acrosome.,subunit:Interacts with the Rho-GAP domain of RACGAP1. Interacts with UBXD5.,tissue specificity:Highly expressed in testis.,		

| Validation Data



Western blot analysis of lysates from Jurkat cells, primary antibody was diluted at 1:1000, 4°over night

| Contact information

Orders: order@immunoway.com
Support: tech@immunoway.com
Telephone: 877-594-3616 (Toll Free), 408-747-0185
Website: http://www.immunoway.com
Address: 2200 Ringwood Ave San Jose, CA 95131 USA



Please scan the QR code to access additional product information:
RND2 Rabbit pAb

